

Umbrella Series

model no:

UM130P

PERFORATED ALUMINUM PANELS
ALUMINUM UMBRELLA FRAME W/ EXTENSION TUBE

customer service:

ASSEMBLERS: If you find any parts missing or damaged, or if you're having difficulty assembling your furniture/equipment, call us at:

* Before calling, have your product model number available.

1-800-253-8619 (Inside U.S.A.)
260-352-2102 (Outside U.S.A.)
Monday thru Friday,
8:00 AM - 4:30 PM Eastern Time
(EXCEPT HOLIDAYS)

maintenance:

Regular inspection and maintenance of all parts, and fasteners is necessary. Tighten all bolts and nuts. Inspect Tops, Seats, Legs, Braces and Fasteners periodically for wear or vandalism. Replace broken or worn parts immediately or take equipment out of service until repairs are made. Use genuine Urbanscape replacement parts.

KEEP THIS ASSEMBLY/SPECIFICATION SHEET FOR FUTURE REFERENCE.

specifications:

NOTE: We reserve the right to change specifications without notice.

Framework assemblies are finished with powder coating; electrostatically applied and oven cured according to powder manufacturer's specifications. Fasteners are stainless steel to resist corrosion.

UMBRELLA PANELS:

The Umbrella Panels are constructed of 1/8" thick, 6061-T651 Mill Finish Heat Treatable, per ASTM B209 aluminum sheet.

UMBRELLA FRAME:

The main post and post extension of the Umbrella Frame are both constructed of 5 mm thick x 1 1/2" diameter aluminum extruded tubing. The umbrella arms are 3/4" square extruded aluminum tubing. The arm connectors located at the top and middle section of frame consists of aluminum castings. The locking pin, rings and chain are made of stainless steel.

GENERAL:

The ground space requirements for the UM130P umbrella is 92" octagon. The overall height is 91 1/2" including the post extension.

- ♦ **THE UMBRELLA MUST BE SECURED TO A PERMANENTLY MOUNTED TABLE TO THE GROUND.**
- ♦ **THE UMBRELLA MUST BE PERMANENTLY SURFACE MOUNTED USING THE APPROVED BASE.**
- ♦ **IF USED WITH THIRD PARTY'S MANUFACTURER'S TABLE OR IN STAND-ALONE APPLICATION THE UMBRELLA MUST BE PERMANENTLY SURFACE MOUNTED TO THE GROUND.**
- ♦ **DO NOT USE UMBRELLA UNLESS IT IS PROPERLY INSTALLED AND MOUNTED TO A CONCRETE SURFACE.**
- ♦ **ASSEMBLY INSTRUCTIONS MUST BE ADHERED TO AS WRITTEN OR SERIOUS INJURIES COULD OCCUR.**
- ♦ **WE STRONGLY RECOMMEND THE UMBRELLA ONLY TO BE USED WITH TABLES MANUFACTURED BY WABASH VALLEY.**

Finished to Look Like Wood, but Act Like Metal

Our faux-wood finishes so closely resemble the real thing that it's hard to believe it's metal and not wood. The timeless beauty and tradition of wood without any of the headaches, such as cracking, warping or rotting. For superior strength and rigidity, we add reinforcements to the aluminum extrusions for all of our faux-wood-finished products.



AAMA 2604-05 Certification

Our seven-step powder-coat system exceeds AAMA 2604-05 (American Architectural Manufacturers Association) test specifications—one of the highest in the industry. Our coating stood up to some of the toughest test specifications, including adhesion, abrasion resistance, chemical resistance, corrosion resistance and fade resistance, to ensure that our products will last longer than anyone else's.

AAMA 2604-05 test Procedures and Performance Requirements

Test Requirements	Compliance
Salt-Spray Resistance: 3,000 hours per ASTM B 117	Yes
Weathering: Color Retention, 5-year south Florida sun, per ASTM D 2244 with a maximum 5deltaE change	Yes
Weathering: Chalk resistance, 5-year south Florida sun, per ASTM D 4214 with a max rating of 8	Yes
Weathering: Gloss Retention, 5-year south Florida sun, per ASTM D 523 with a min of 30%	Yes
Weathering: Resistance to Erosion, 5-year south Florida sun, with less than 10% film loss	Yes
Chemical Resistance: Muriatic Acid, Mortar, Nitric Acid, Detergent and Window Cleaner	Yes
Dry Film Hardness per ASTM D 3363 with no rupture	Yes
Adhesion: Dry Adhesion, Wet Adhesion and Boiling Water Adhesion using the cross hatch method with 0% failure	Yes

Seven Steps to Long-Lasting Furniture: Our Superior Powder-Coating Process

What's responsible for the good looks and durability of all our products? Our seven-step powder-coating process, which is unlike any other in the industry. While other companies also offer powder-coated products, our seven-step process ensures the highest quality and longevity for our products.

STEP 1—Shot-Blasting to White Metal

First, all of our metal is cleaned to white metal. We strip it to its purest form using our state-of-the-art shot-blast system. This process removes all the impurities from the metal, especially at the weld joints. It's more effective than traditional acid cleaning and also creates a more textured surface, allowing for better adhesion of the powder coat.

STEP 2—Five-Stage Chemical Pre-Treatment

Next, the metal goes through a five-stage chemical pre-treatment cleaning process. It is etched, rinsed and cleaned to eliminate any residue, then it's sealed—further promoting adhesion and encouraging corrosion prevention.

STEP 3—Pre-Heating

Prior to coating, the part is pre-heated so that it can be dried, warmed and then sent directly to the spray booth. With the part heated, it draws powder into the joints, corners and hard-to-reach places to ensure complete coating of the entire surface.

STEP 4—Zinc-Rich Epoxy Coating

After the pre-heating, a Zinc-Rich epoxy powder-coating is applied to provide the highest quality of corrosion control. It works as a prime coat to protect the metal from corrosion before it receives its topcoat.

STEP 5—Zinc-Rich Epoxy Coating Gel-Cure

Next, the Zinc-Rich epoxy coating is cured to a gel, allowing the polyester topcoat to combine with the Zinc-Rich epoxy, promoting better adhesion.

STEP 6—AAMA 2604-Compliant Polyester Topcoat

A polyester topcoat is then applied that's specially formulated to meet AAMA 2604 standards for fading, cracking, chalking, gloss retention, erosion resistance and chemical resistance. No one else in the industry uses this high standard of topcoat. It ensures that our products will maintain their beauty and durability for years to come.

STEP 7—Final Cure

Finally, the metal goes through a cure oven, which hardens the topcoat and completes the integrated bonding between the Zinc-Rich epoxy and AAMA 2604-Compliant Polyester Topcoat.

assembly procedures: IMPORTANT: Assemblers should be reasonably skilled in the assembly of commercial grade/heavy duty fabricated steel equipment.

To ensure proper assembly, it is suggested that you take adequate time to locate and identify each part. To prevent scratching of the finished pieces, we recommend this unit to be assembled on a clean, flat, solid, surface with a drop cloth, allowing plenty of working room. Also please read the instructions and study the sketches very carefully. A little extra time spent before assembly will be well worth it in performing a complete, proper assembly. Please note that all parts have been pre-cut and pre-drilled.

During the assembly process leave all bolts and nuts "finger tight", until the entire unit is completely assembled. This allows room for movement to level or adjust all seats, tops, benches, framework and braces if necessary. After final adjustment and leveling, permanently tighten all nuts, bolts and fasteners.

76

STEP 1

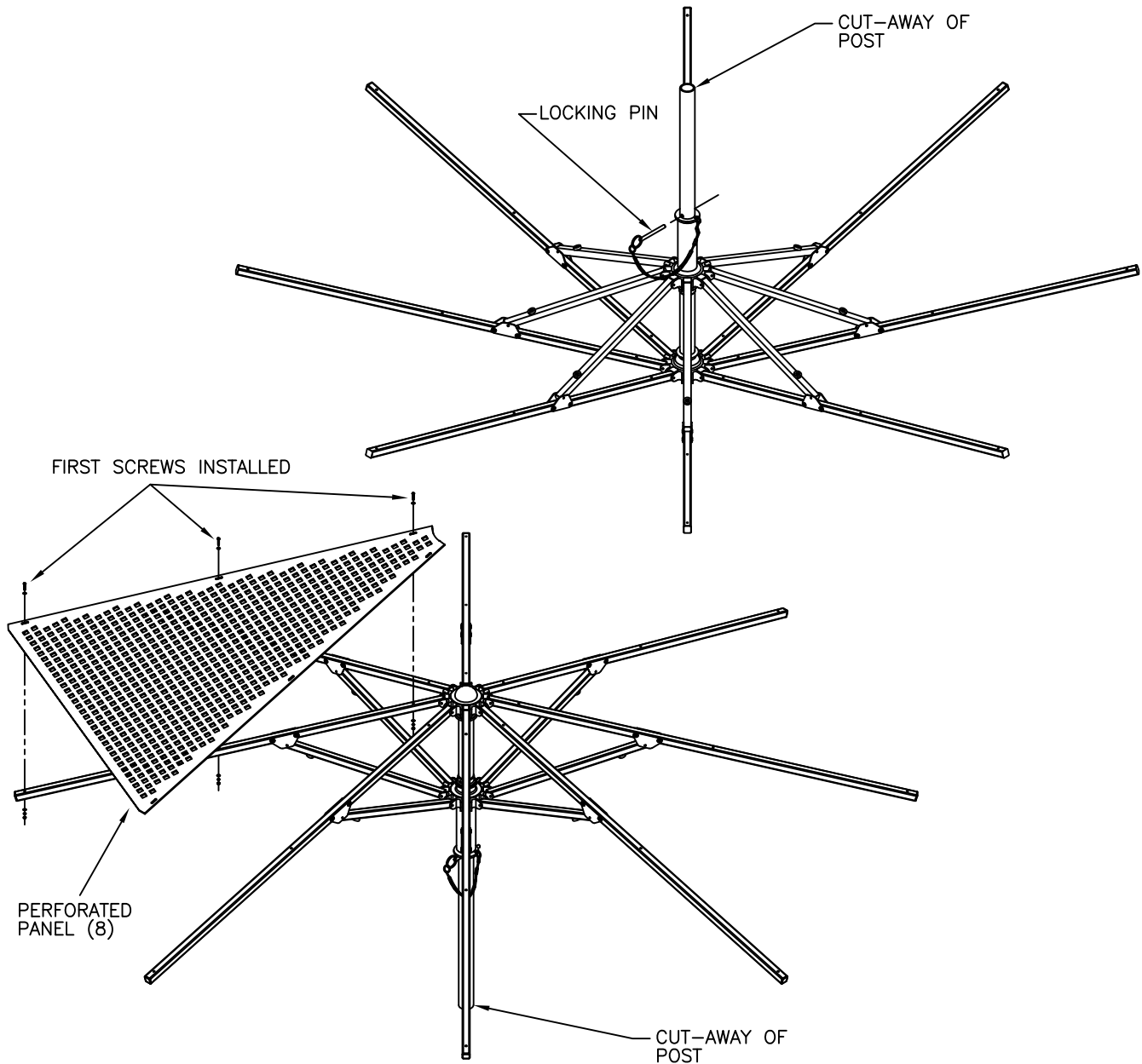
Remove Umbrella Frame from box and rotate to up-side-down position. Allow arms to fold down and open. Insert Locking Pin into hole in post.

STEP 2

Reinvert Umbrella Frame and stabilize post securely at base. Assemble each panel, loosely, using three 1/4-20 Pan Head Machine Screws with two 1/4" Flat Washers, one 1/4" Nut and one 1/4" Lock Washer per each screw.

STEP 3

Continue assembling the panels in a counter-clockwise pattern securing the previous panel with the current panel.



installation: WARNING: The proper installation for Urbanscape products may depend upon many factors unique to the site, location, or use of a particular product. Consult with your contractor or other professional to determine your specific installation requirements.

assembly procedures (con't):

STEP 4

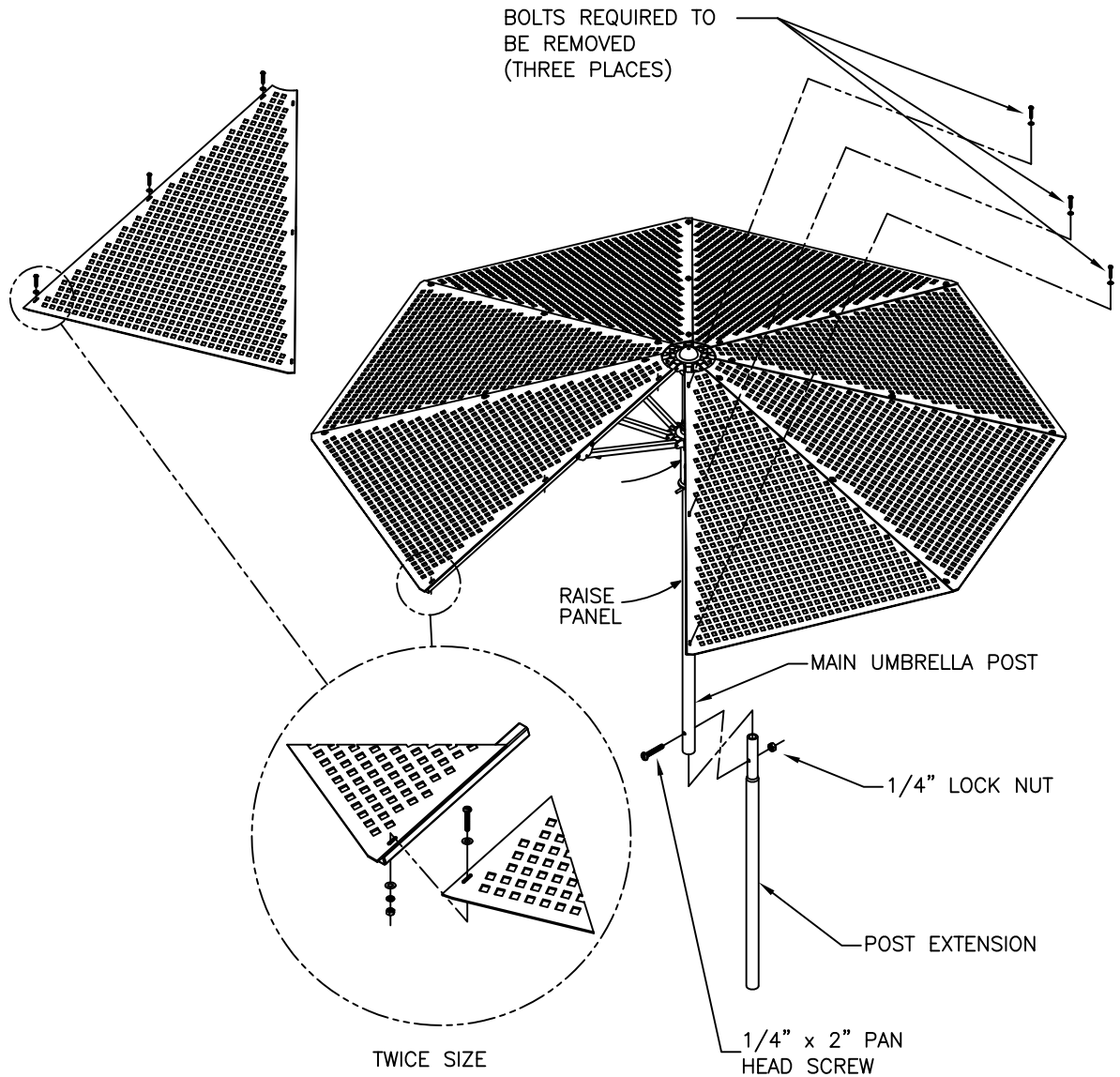
As shown below, the last panel must be "tucked" under the first panel. In order to accomplish that, the original screws must be removed and panel raised. Once the last panel is "tucked", reinstall the screws thru both panels. The left side of the last panel can be connected to finish the canopy.

STEP 5

When final panel is in place, tighten all fasteners with proper tools.

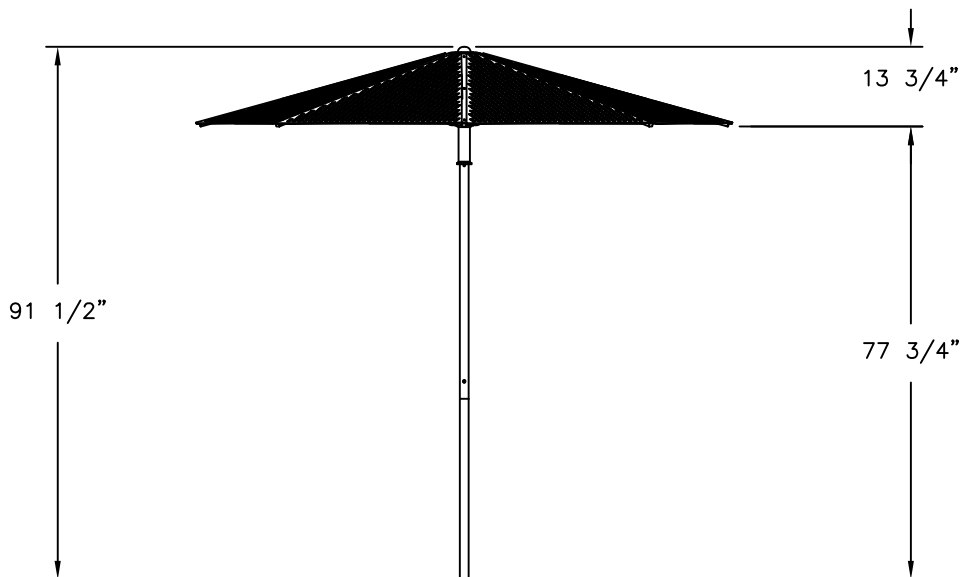
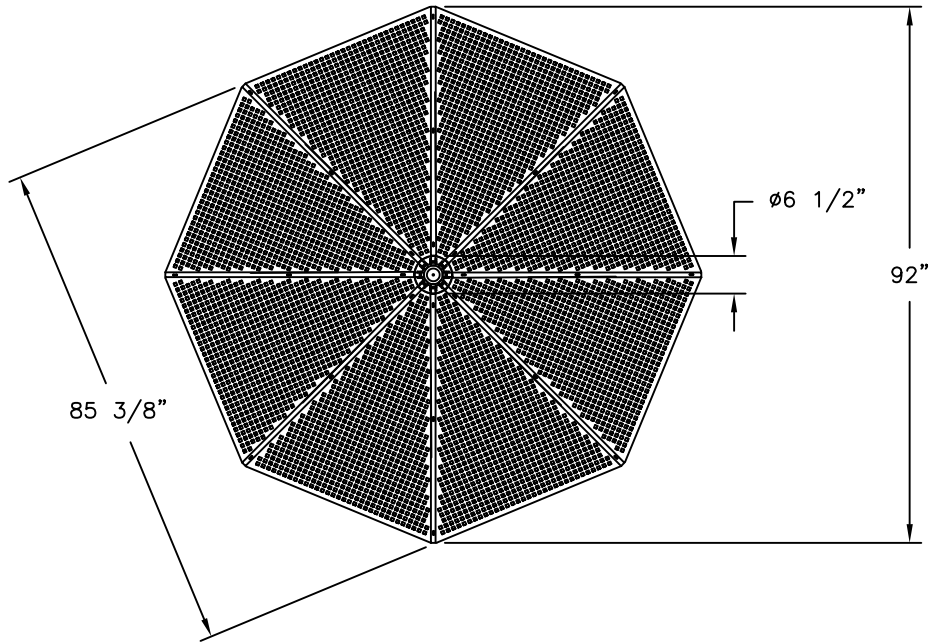
STEP 6

Install the Post Extension using one 1/4" x 2" Pan Head Machine Screw and one 1/4" lock nut and place umbrella in determined location.



product dimensions:

UM130P



assembly procedures (con't):

UMBRELLA SECUREMENT

There are a variety of different tables that can accommodate an umbrella. The importance to the use of an umbrella is the proper securement of the product. The information on pages 6 & 7 gives detailed instruction to accomplish the securement.

NOTE:

All tables MUST be surface mounted to a secure foundation prior to installing umbrella.

TABLES WITH CENTER BRACES

STEP 1

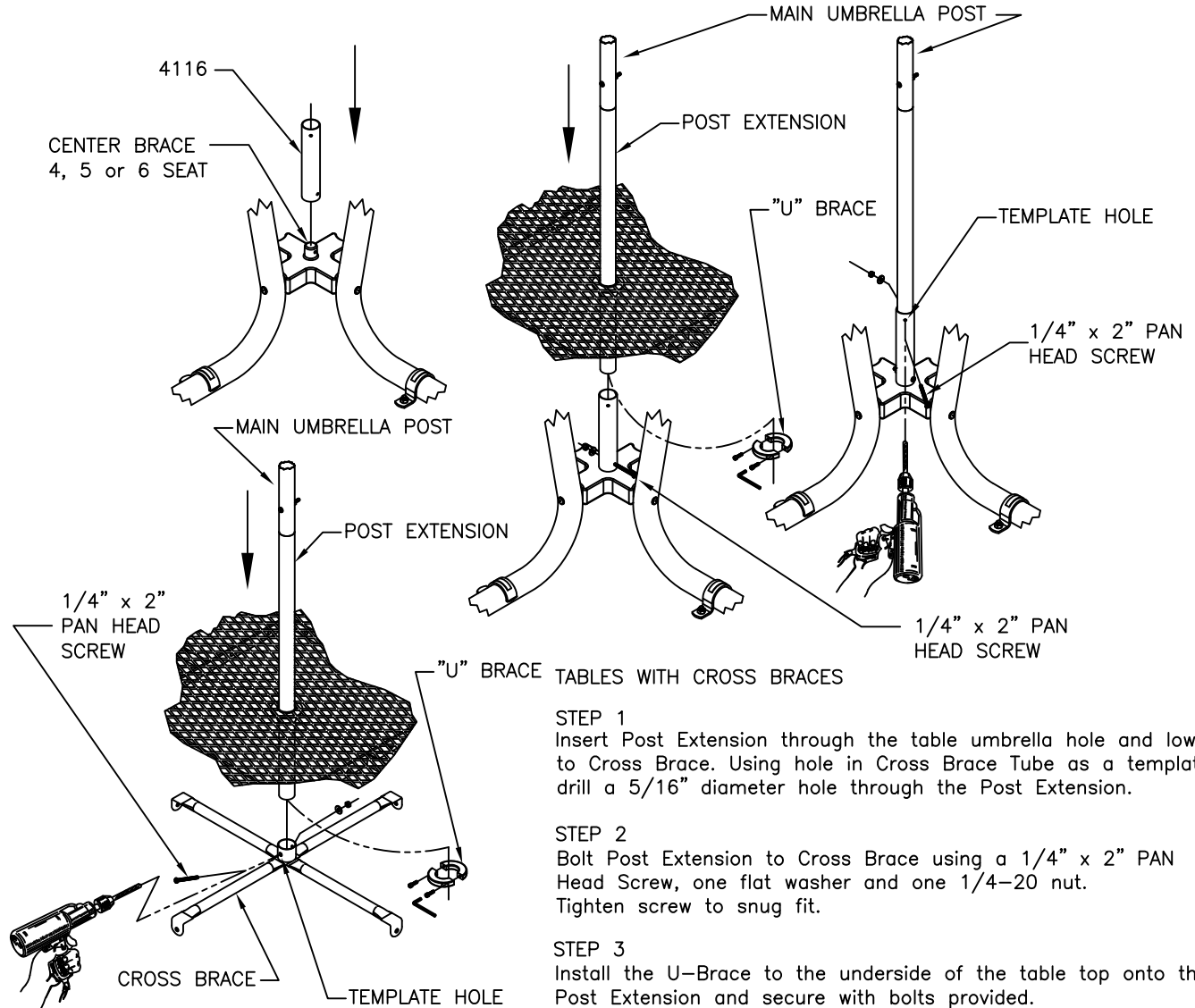
Bolt Umbrella Adaptor 4116 to center brace using a 1/4" x 2" Pan Head Screw, one flat washer and one 1/4-20 nut. Tighten screw to snug fit.

STEP 2

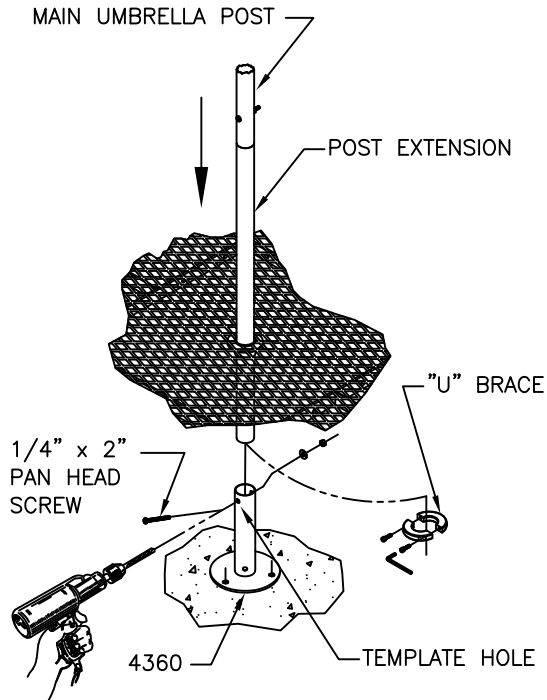
Insert Post Extension through the table umbrella hole and lower to Umbrella Adaptor until the post "bottoms" out. Using hole in Umbrella Adaptor 4116 as a template, drill a 5/16" diameter hole through Post Extension. Bolt Post Extension to Umbrella Adaptor using a 1/4" x 2" Pan Head Screw, one flat washer and one 1/4-20 nut. Tighten screw to snug fit.

STEP 3

Install the U-Brace to the underside of table top onto the Post Extension and secure with bolts provided.



assembly procedures (con't):



TABLES WITH INDEPENDENT LEGS

STEP 1

Insert Post Extension through the table umbrella hole and lower to surface mount 4360 Umbrella Base. (See installation below) Using hole in Umbrella Brace Tube as a template, drill a 5/16" diameter hole through Post Extension.

STEP 2

Bolt Post Extension to 4360 Umbrella Base using a 1/4" x 2" Pan Head Screw, one flat washer and one 1/4-20 nut. Tighten screw to snug fit.

STEP 3

Install the U-Brace to the underside of the table top onto the Post Extension and secure with bolts provided.

SURFACE MOUNT INSTRUCTIONS FOR UMBRELLA BASE

STEP 1

Place the surface mount 4360 Umbrella Base in its' chosen location. Use some form of marking instrument to trace the hole pattern in base plate.

STEP 2

Drill and place the 4360 Umbrella Base's foundation securement hardware. When the foundation securement hardware has been installed, place the unit in its' new location and secure to the foundation.

TABLES WITH INGROUND LEGS

NOTE:

Secure the umbrella AFTER the seat arms are assembled.

STEP 1

Insert Post Extension through the table umbrella hole and lower until desired umbrella height is established. Using hole in square post as a template, drill a 5/16" diameter hole through Post Extension.

STEP 2

Secure Post Extension to table leg using one 1/4" x 4 1/2" Hex Bolt, two flat washers and one 1/4-20 nut. Tighten to snug fit.

