

model no:

SY110D, SY110P, SY120D, SY120P, SY125D,
SY125P, SY135D, SY135P, SY150D, SY150P,
SY200D, SY200P, SY210D, SY210P, SY215D,
SY215P, SY225D, SY225P, SY240D, SY240P

SPYDER SERIES

46" ROUND, SQUARE & OCTAGON TABLES,
7' & 11' PICNIC TABLES INGROUND & SURFACE MOUNT
EXPANDED METAL & PERFORATED

customer service:

ASSEMBLERS: If you find any parts missing or damaged, or if you're having difficulty assembling your furniture/equipment, call us at:

* Before calling, have your product model number available.

1-800-253-8619 (Inside U.S.A.)

260-352-2102 (Outside U.S.A.)

Monday thru Friday,

8:00 AM - 4:30 PM Eastern Time

(EXCEPT HOLIDAYS)

maintenance:

Regular inspection and maintenance of all parts, and fasteners is necessary. Tighten all bolts and nuts. Inspect Tops, Seats, Legs, Braces and Fasteners periodically for wear or vandalism. Replace broken or worn parts immediately or take equipment out of service until repairs are made. Use genuine Wabash Valley replacement parts.

To restore plastisol coating to its luster after prolonged use, wash/rinse/dry and use Armor-All ® or similiar quality vinyl protectant.

KEEP THIS ASSEMBLY/SPECIFICATION SHEET FOR FUTURE REFERENCE.

specifications:

NOTE: We reserve the right to change specifications without notice.

Heat fused poly-vinyl coating, finished on inner-metal structure, to an approximate 3/16" thickness.

Framework assemblies are finished with powder coating; electrostatically applied and oven cured according to powder manufacturer's specifications. Fasteners are stainless steel to resist corrosion.

TOPS

The picnic, octagon, and square tops use 3/4 #9 steel mesh for the expanded metal pattern and 12 gage sheet steel for the perforated pattern. The outside rails use 10 gage steel, while the mounting brackets are made of 1/4" flat bar stock. The support braces are made of 1/8" stripe steel and the umbrella collar is 14 gage tubing.

SEATS

The concave seats use 3/4 #9 steel mesh for the expanded metal pattern and 12 gage sheet steel for the perforated. 1/8" strip steel is used for the edging, and 1/4" flat bar for the mounting brackets.

TABLE FRAME

The spyder legs are made of 12 gage x 2 7/8" od tubing. The brace mounting tab is 1/4" thick plate along with seat assembly mounting plate and female screw in attachment receiver. The 46" spyder leg uses a 1/4" flat bar for the mounting bracket, and the brace mounting tab is 7 gage plate. The surface mount plates are made of 1/4" x 6" steel plate. The inground screw in attachments are 12 gage x 2 7/8" tubing with a 7 gage insert, and 5/8" threaded stud. The player braces are made of 15 gage x 1" od steel tubing. The spyder cross brace is of 16 gage x 1 1/4" od tubing with a 12 gage x 2 3/8" od center piece. The mounting plate covers are cast aluminum All tubing is galvanized.

GENERAL

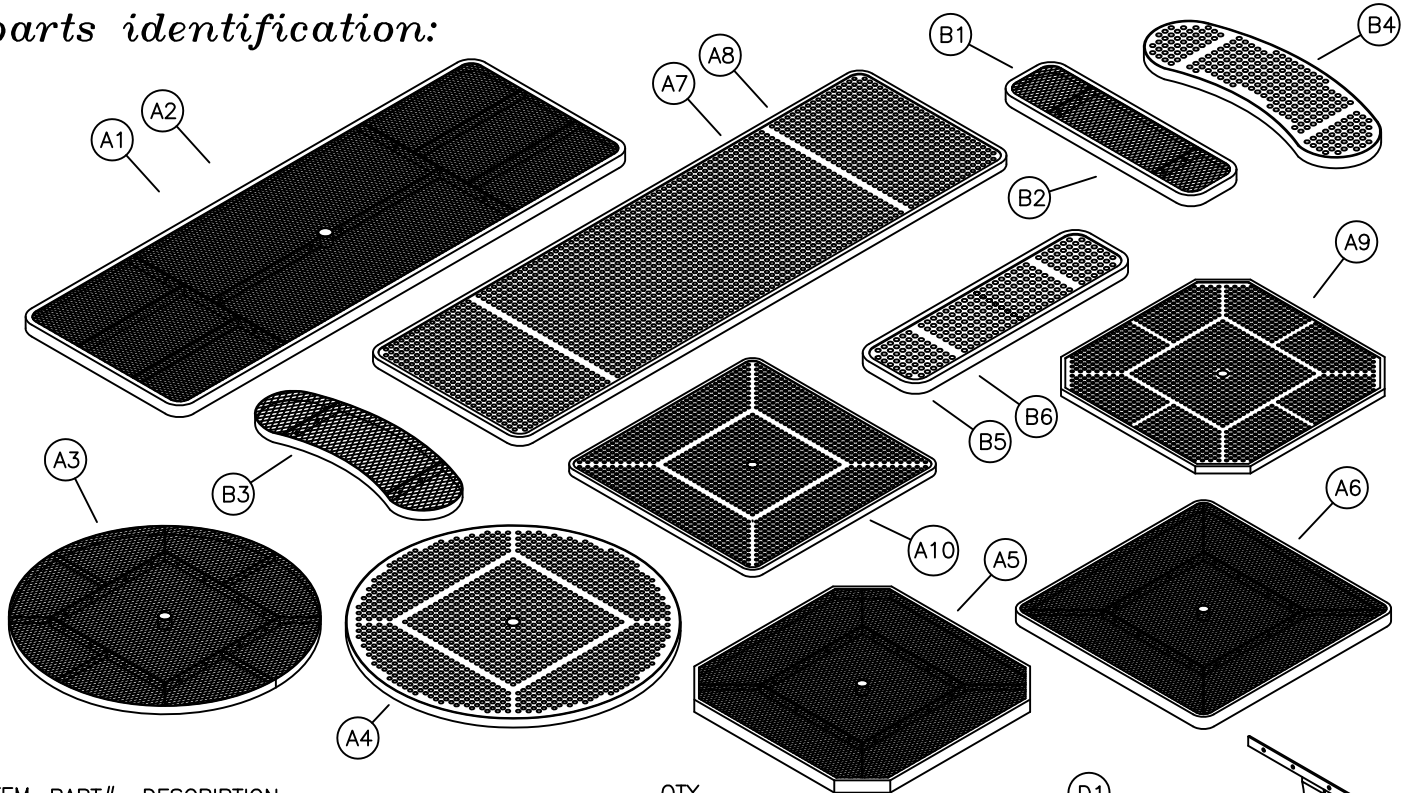
SY135D, SY225D, SY135P and SY225P ground space requirements are 84 3/8" x 64 3/4". SY150D, SY240D, SY150P and SY240P ground

space requirements are 132 3/8" x 64 3/4". It is 30" to the table's top and 19" to the top of the seats.

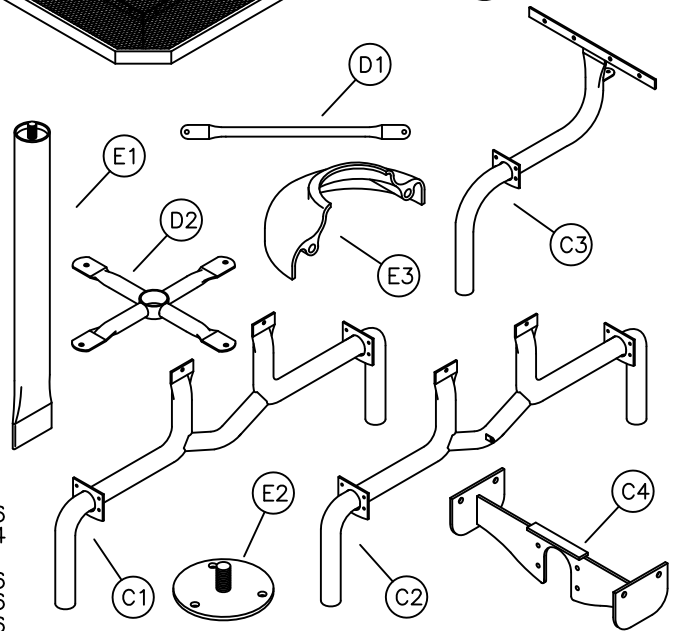
SY120D, SY125D, SY120P SY125P, SY210D, SY215D, SY210P and SY215P ground space requirements are 73 3/4" square. SY110D, SY110P, SY200D and SY200P ground space requirements are 77 11/16" square. It is 29 3/16" to the top of the table and 19 13/16" to the top of the seats.

NOTE: When Umbrellas are used on Tables, the Umbrellas must be secured.
Wabash Valley Umbrellas include an Umbrella Collar for securing.

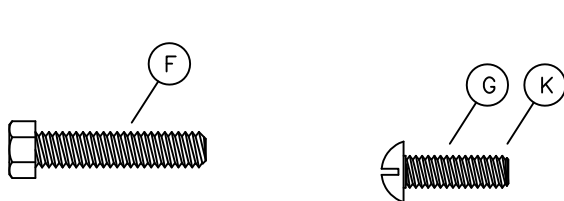
parts identification:



| ITEM | PART# | DESCRIPTION | QTY |
|------|-------|-----------------------------------|--------|
| A1 | 7714 | 7' EXPANDED METAL PICNIC TOP | 1 |
| A2 | 7717 | 11' EXPANDED METAL PICNIC TOP | 1 |
| A3 | 7665 | 46" EXPANDED METAL ROUND TOP | 1 |
| A4 | 7976 | 46" PERFORATED ROUND TOP | 1 |
| A5 | 7505 | 46" EXPANDED METAL OCTAGON TOP | 1 |
| A6 | 7504R | 46" EXPANDED METAL SQUARE TOP | 1 |
| A7 | 7957 | 11' PERFORATED PICNIC TOP | 1 |
| A8 | 7962 | 7' PERFORATED PICNIC TOP | 1 |
| A9 | 7970 | 46" PERFORATED OCTAGON TOP | 1 |
| A10 | 7971 | 46" PERFORATED SQUARE TOP | 1 |
| B1 | 7530R | 3' EXPANDED METAL SEAT | 4 |
| B2 | 7716 | 4' EXPANDED METAL SEAT | 4 |
| B3 | 7666 | 3' EXPANDED METAL CONCAVE SEAT | 4 |
| B4 | 8000 | 3' PERFORATED CONCAVE SEAT | 4 |
| B5 | 7996 | 4' PERFORATED RE SEAT | 4 |
| B6 | 7998 | 3' PERFORATED RE SEAT | 4 |
| C1 | 7205 | PICNIC SPYDER LEG | 2 |
| C2 | 7234 | PICNIC SPYDER CENTER LEG | 1 |
| C3 | 7206 | 46" SPYDER LEG | 4 |
| C4 | 7228 | SPYDER LEG SEAT ASSEMBLY | 4 OR 6 |
| D1 | 7388 | PLAYER BRACE | 2 OR 4 |
| D2 | 7207 | SPYDER CROSS BRACE | 1 |
| E1 | 7219 | INGROUND SCREW IN ATTACHMENT | 4 OR 6 |
| E2 | 7256 | SURFACE MOUNT SCREW IN ATTACHMENT | 4 OR 6 |
| E3 | 7121 | MOUNTING PLATE COVERS (OPTIONAL) | 4 OR 6 |



hardware identification:



ASSEMBLY TOOLS REQUIRED

- 1 - REGULAR TIP SCREWDRIVER
- 2 - 1/2" WRENCHES
- 1 - 3' OR 6' LEVEL

ITEMS IN HARDWARE PACKAGE #:

| ITEM | PART# | DESCRIPTION | QTY | (2) | 21061 | 21062 | 21064 | 21101 |
|------|-------|--|-----|-----|-------|-------|-------|-------|
| F | 17011 | 5/16-18 x 1 1/2" HEX HEAD BOLT - SS | 48 | 19 | 20 | 0 | 0 | 0 |
| G | 17088 | 5/16-18 x 1" TRUSS HEAD MACHINE SCREW - SS | 4 | 1 | 2 | 0 | 0 | 0 |
| H | 17028 | 3/8" FLAT WASHER - SS | 100 | 40 | 44 | 0 | 0 | 0 |
| I | 17032 | 5/16-18 HEX FINISH NUT - SS | 52 | 20 | 22 | 0 | 0 | 0 |
| J | 17050 | 5/16" SPLIT LOCK WASHER - SS | 52 | 20 | 22 | 0 | 0 | 0 |
| K | 17052 | 1/4-20 x 1" MACHINE SCREW - SS | 0 | 0 | 0 | 0 | 0 | 2 |

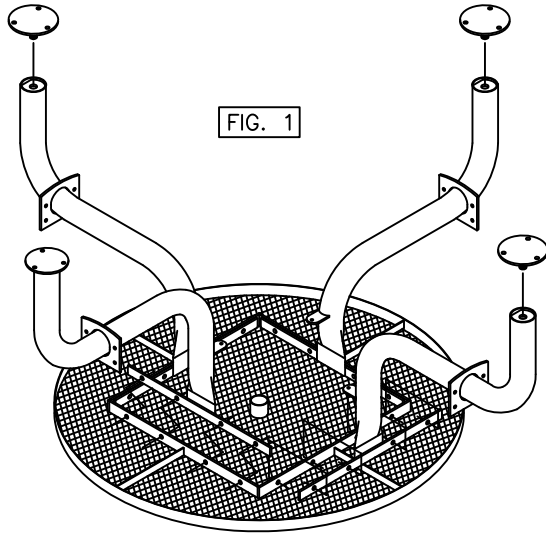
assembly procedures: IMPORTANT: Assemblers should be reasonably skilled in the assembly of commercial grade/heavy duty fabricated steel equipment.

To ensure proper assembly, it is suggested that you take adequate time to locate and identify each part. To prevent scratching of the finished pieces, we recommend this unit to be assembled on a clean, flat, solid, surface with a drop cloth, allowing plenty of working room. Also please read the instructions and study the sketches very carefully. A little extra time spent before assembly will be well worth it in performing a complete, proper assembly. Please note that all parts have been pre-cut and pre-drilled.

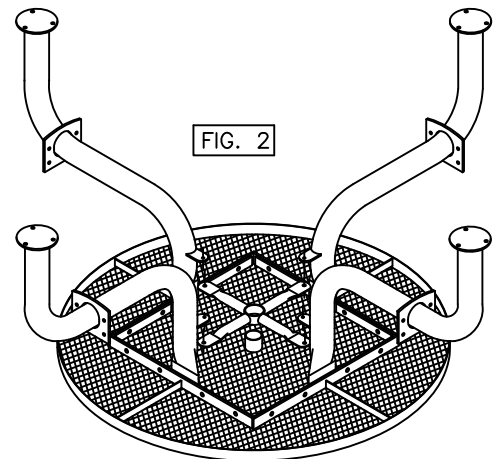
During the assembly process leave all bolts and nuts "finger tight", until the entire unit is completely assembled. This allows room for movement to level or adjust all seats, tops, benches, framework and braces if necessary. After final adjustment and leveling, permanently tighten all nuts, bolts and fasteners.

7L

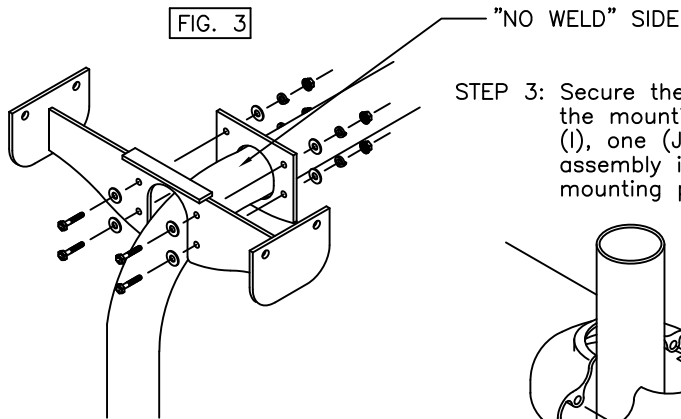
46" SPYDER TABLES



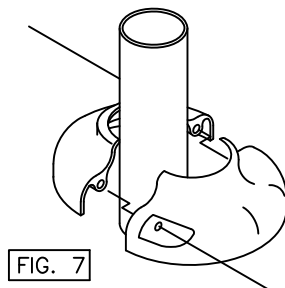
STEP 1: Invert top (A-) and secure spider legs (C3) to the inside of the top's mounting brackets using one (F), one (I) and two (H) and one (J) per (F), see FIG. 1. Attach screw in attachment (E1) or (E2), see FIG. 1.



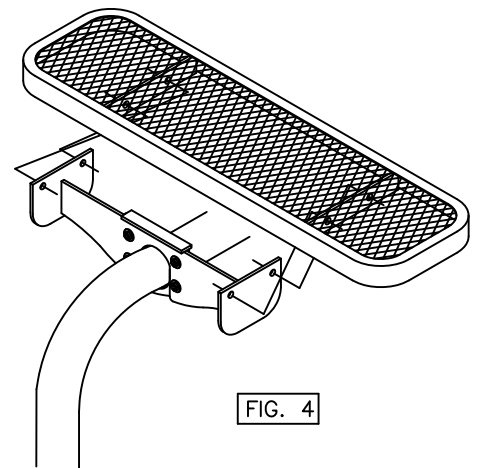
STEP 2: Attach spider cross brace (D2) to the inverted top side of the mounting tabs using one (G), (I), (J) and (H), see FIG. 2. After all parts have been secured carefully rotate the table to its upright position.



STEP 3: Secure the spider leg seat assembly (C4) to the outside of the the mounting bracket on the spider leg (C-) using one (F), one (I), one (J) and two (H) per (F), see FIG. 3. NOTE: Be sure seat assembly is assembled to leg with "NO WELD" side against leg mounting plate.



STEP 4: Place the seat (B-) on the spider leg seat assembly (C4) so that the seat's mounting brackets are outside the seat assembly's mounting brackets, see FIG. 4. Secure using one (F), one (I) and two (H) and one (J) per (F). Level all seats and top, and tighten with proper wrenches.

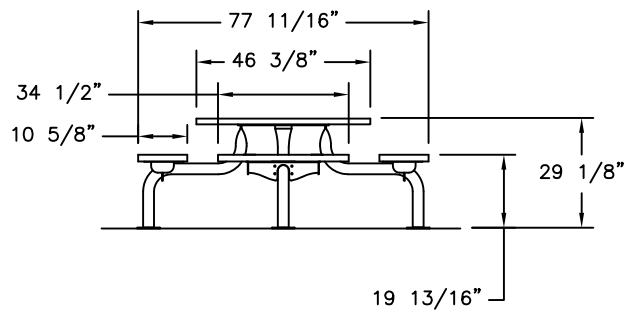
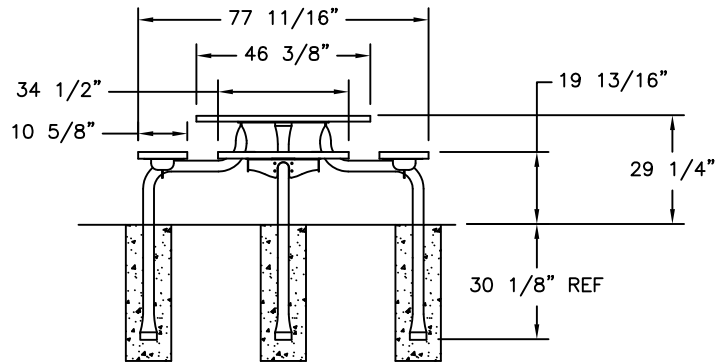


If mounting plate covers (E3) are used, place halves around legs and secure with 2 (K) screws, see FIG. 7. Draw to a snug fit being careful not to over tighten.

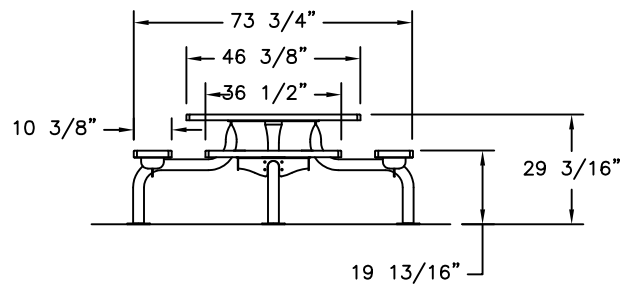
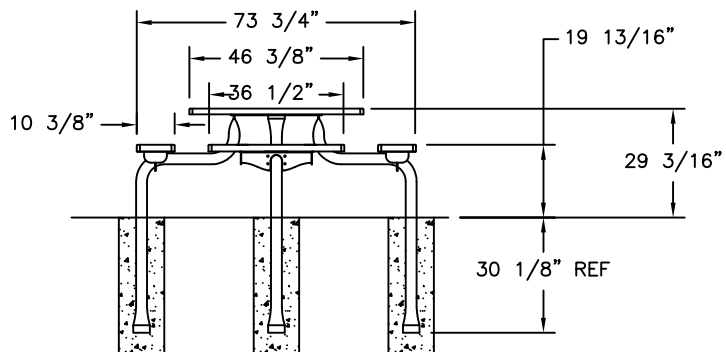
installation: WARNING: The proper installation for Wabash Valley products may depend upon many factors unique to the site, location, or use of a particular product. Consult with your contractor or other professional to determine your specific installation requirements.

product dimensions:

46" ROUND WITH CONCAVE SEATS

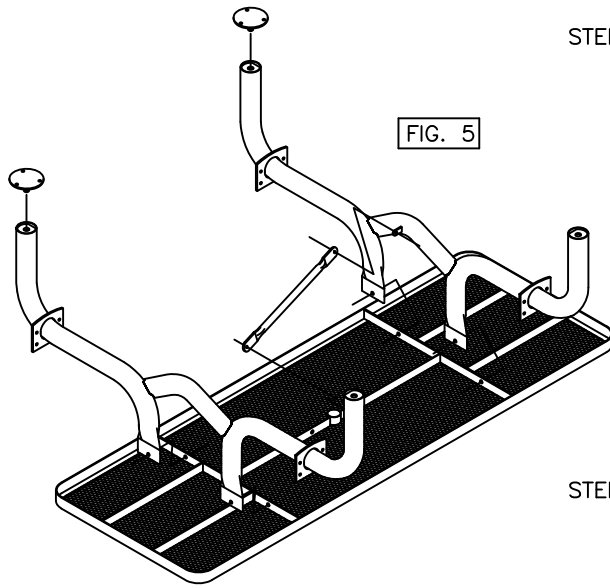


46" SQUARE/OCTAGON WITH RECTANGULAR SEATS



assembly procedures cont:

7' SPYDER TABLES



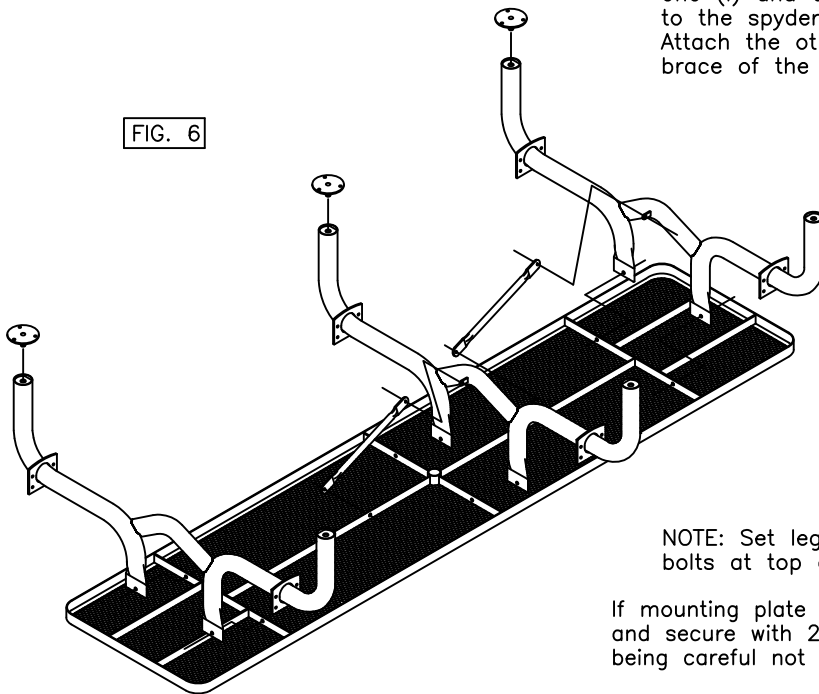
STEP 1: Invert top (A-) and secure spyder legs (C1) to the outside of the tops mounting bracket using one (F), one (I) and two (H) and one (J) per (F). Attach brace (D1) for 7' top to the spyder leg tab using one (G), (I), (J) and two (H). Attach the other end of the brace (D1) to the center support brace of the top using one (F), (I), (J) and two (H). Attach screw in attachments (E1 or E2), see FIG. 5. After all parts have been secured carefully rotate table to it's upright position.

NOTE: Set legs vertically at 90 degrees prior to tightening bolts at top and brace locations.

If mounting plate covers (E3) are used, place halves around legs and secure with 2 (K) screws, see FIG. 7. Draw to a snug fit, being careful not to over tighten.

STEP 2: Follow Steps 3 and 4, FIG. 3 & 4, on page 3 to finish the assembly of the 7' Spyder Table.

11' SPYDER TABLES



STEP 1: Invert top (A-) and secure spyder legs (C1) to the outside of the tops mounting bracket using one (F), one (I) and two (H) and one (J) per (F). Attach brace (D1) to the spyder leg tab using one (G), (I), (J) and two (H). Attach the other end of the brace to the center support brace of the top using one (F), (I), (J) and two (H).

STEP 2: Attach spyder center leg (C2) using one (F), one (I) and two (H) and one (J) per (F). Attach brace (D1) to the spyder center leg tabs using one (G), (I), (J) and two (H). Attach the other end of the brace to the center support brace of the top using one (F), (I), (J) and two (H). Attach screw in attachments (E1 or E2), see FIG. 6. After all parts have been secured carefully rotate table to it's upright position.

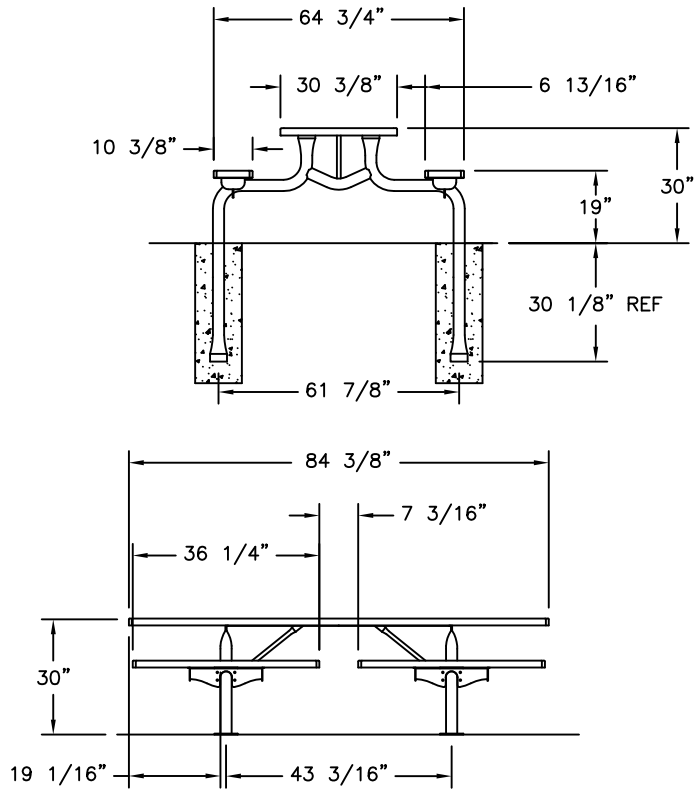
NOTE: Set legs vertically at 90 degrees prior to tightening bolts at top and brace locations.

If mounting plate covers (E3) are used, place halves around legs and secure with 2 (K) screws, see FIG. 7. Draw to a snug fit being careful not to over tighten.

STEP 3: Follow Steps 3 and 4, FIG. 3 & 4, on page 3 to finish the assembly of the 11' Spyder Table.

product dimensions:

7' SPYDER PICNIC TABLE



11' SPYDER PICNIC TABLE

