

*model no:*

**SY112D, SY112P,  
SY202D, SY202P**

**SPYDER SERIES**

**36" ROUND EXPANDED METAL AND PERFORATED TABLES  
PORTABLE/SURFACE MOUNT/INGROUND**

*customer service:*

**ASSEMBLERS:** If you find any parts missing or damaged, or if you're having difficulty assembling your furniture/equipment, call us at:

\* Before calling, have your product model number available.

**1-800-253-8619 (Inside U.S.A.)**

**260-352-2102 (Outside U.S.A.)**

Monday thru Friday,

8:00 AM - 4:30 PM Eastern Time

(EXCEPT HOLIDAYS)

*maintenance:*

Regular inspection and maintenance of all parts, and fasteners is necessary. Tighten all bolts and nuts. Inspect Tops, Seats, Legs, Braces and Fasteners periodically for wear or vandalism. Replace broken or worn parts immediately or take equipment out of service until repairs are made. Use genuine Wabash Valley replacement parts.

To restore plastisol coating to its luster after prolonged use, wash/rinse/dry and use Armor-All ® or similar quality vinyl protectant.

KEEP THIS ASSEMBLY/SPECIFICATION SHEET FOR FUTURE REFERENCE.

*specifications:*

NOTE: We reserve the right to change specifications without notice.

Heat fused poly-vinyl coating, finished on inner-metal structure, to an approximate 3/16" thickness.

Framework assemblies are finished with powder coating; electrostatically applied and oven cured according to powder manufacturer's specifications. Fasteners are stainless steel to resist corrosion.

**TOPS**

The table tops use 3/4 #9 expanded metal mesh and 12 gage on perforated. The perimeter rings on the tops are 1/8" strip steel. The top's mounting brackets are made of 1/4 flat bar stock. The support braces are made of 1/8" strip steel and the umbrella collar is 14 gage tubing.

**SEATS**

The concave seats use 3/4 #9 expanded metal and 12 gage for perforated. The perimeter ring on the seats are 1/8" strip steel. The mounting brackets are 1/4 flat bar stock.

**TABLE FRAME**

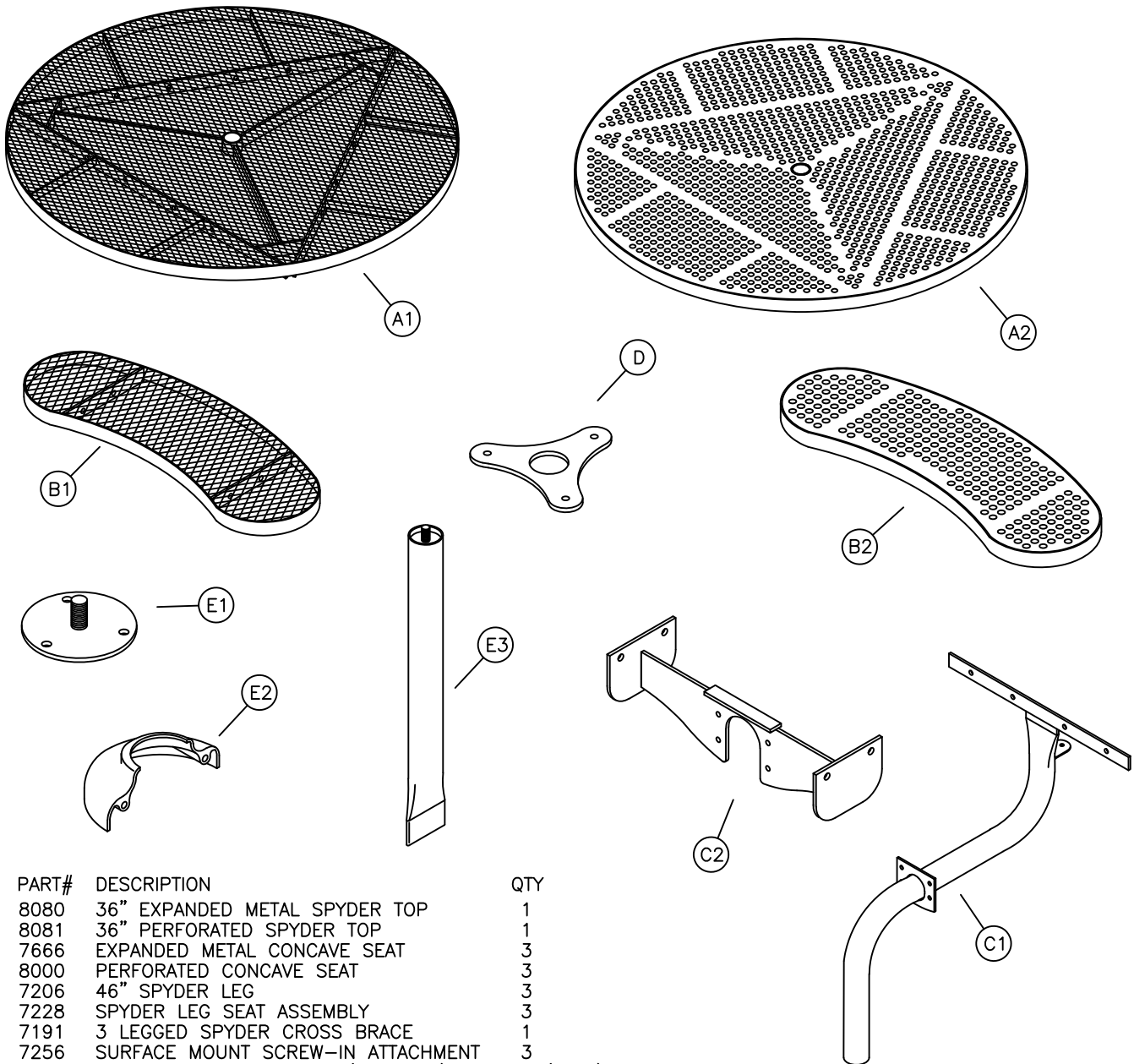
The Spyder legs are made of 12 gage x 2 7/8" od tubing. The brace mounting tab is 7 gage sheet steel along with the female screw-in attachment receiver. The seat mounting bracket is 1/4" plate. The 36" Spyder leg uses 1/4" flat bar for top mounting. The surface mount screw-in attachments are made of steel plate 1/4" x 6" with a 5/8" threaded stud. The Spyder cross brace is made of 10 gage sheet steel. The inground screw-in attachments are 14 gage x 2 7/8" tubing with a 7 gage insert and 5/8" threaded stud. The mounting plate covers are made of 319 cast aluminum.

**GENERAL**

All Three Legged Spyder 3-seat table ground space requirements are 67 1/2" x 62". The SY112D and SY112P table top height is 29" and the seat height is 19 5/8". The SY202D and SY202P table top height is 28 3/4" and the seat height is 19 3/8".

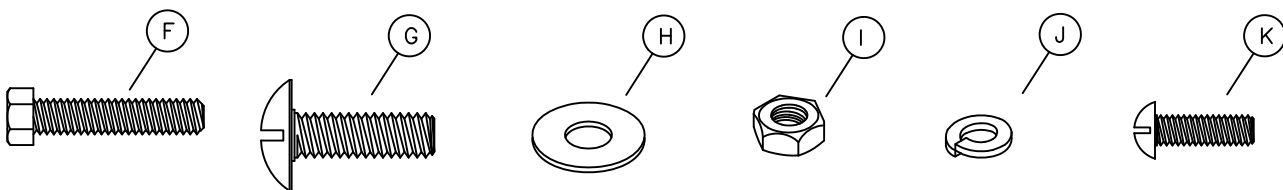
NOTE: When Umbrellas are used on Tables, the Umbrellas must be secured.  
Wabash Valley Umbrellas include an Umbrella Collar for securing.

## parts identification:



ITEM	PART#	DESCRIPTION	QTY
A1	8080	36" EXPANDED METAL SPYDER TOP	1
A2	8081	36" PERFORATED SPYDER TOP	1
B1	7666	EXPANDED METAL CONCAVE SEAT	3
B2	8000	PERFORATED CONCAVE SEAT	3
C1	7206	46" SPYDER LEG	3
C2	7228	SPYDER LEG SEAT ASSEMBLY	3
D	7191	3 LEGGED SPYDER CROSS BRACE	1
E1	7256	SURFACE MOUNT SCREW-IN ATTACHMENT	3
E2	7121	MOUNTING PLATE COVERS (OPTIONAL)	3 (SETS)
E3	7219	INGROUND LEG SCREW-IN ATTACHMENT	3

## hardware identification:



ITEMS INCLUDED IN HARDWARE PACKAGE #:

ITEM	PART#	DESCRIPTION	21088	21101
F	17011	5/16-18 x 1 1/2" HEX HEAD BOLT - SS	36	0
G	17088	5/16-18 x 1" TRUSS HEAD MACHINE SCREW - SS	3	0
H	17028	3/8" ID x 7/8" OD WASHER - SS	75	0
I	17032	5/16-18 HEX FINISH NUT - SS	39	0
J	17050	5/16" SPLIT LOCK WASHER - SS	39	0
K	17052	1/4-20 x 1" MACHINE SCREW - SS	0	2

### ASSEMBLY TOOLS REQUIRED

- 1 - REGULAR TIP SCREWDRIVER
- 2 - 1/2" WRENCHES
- 1 - 3' OR 6' LEVEL

## assembly procedures:

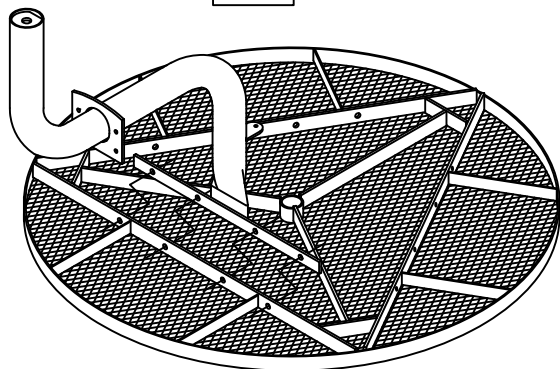
**IMPORTANT:** Assemblers should be reasonably skilled in the assembly of commercial grade/heavy duty fabricated steel equipment.

To ensure proper assembly, it is suggested that you take adequate time to locate and identify each part. To prevent scratching of the finished pieces, we recommend this unit to be assembled on a clean, flat, solid, surface with a drop cloth, allowing plenty of working room. Also please read the instructions and study the sketches very carefully. A little extra time spent before assembly will be well worth it in performing a complete, proper assembly. Please note that all parts have been pre-cut and pre-drilled.

During the assembly process leave all bolts and nuts "finger tight", until the entire unit is completely assembled. This allows room for movement to level or adjust all seats, tops, benches, framework and braces if necessary. After final adjustment and leveling, permanently tighten all nuts, bolts and fasteners.

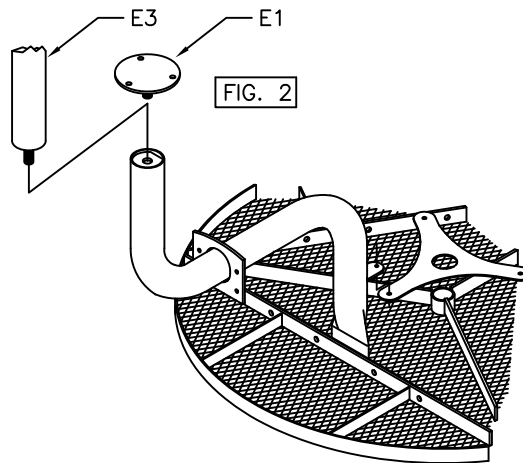
74

FIG. 1



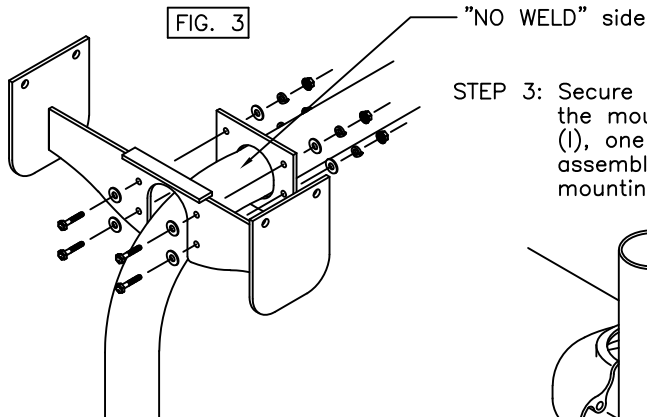
STEP 1: Invert top (A-) and secure Spyder legs (C1) to the inside of the top's mounting brackets using one (F), (I), (J) and two (H) per (F), see FIG. 1.

STEP 2: Attach Spyder cross brace (D) to the inverted top side of the mounting tabs using one (G), one (I), and (H). Attach the screw-in attachments (E1) or (E3), see FIG. 2. After all parts have been secured carefully rotate the table to its upright position.

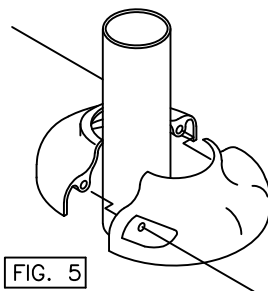


If mounting plate covers (E2) are used, place halves around legs and secure with 2 (K) screws, see FIG. 5. Draw to a snug fit being careful not to over tighten.

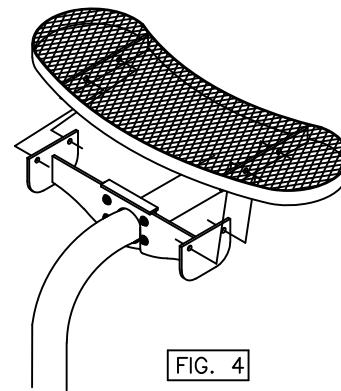
FIG. 3



STEP 3: Secure the Spyder leg seat assembly (C2) to the outside of the the mounting bracket on the Spyder leg (C1) using one (F), one (I), one (J) and two (H) per each (F), see FIG. 3. Be sure seat assembly is assembled to leg with "NO WELD" side against leg mounting plate.



STEP 4: Place the seat (B-) on the Spyder leg seat assembly (C2) so that the seat's mounting brackets are outside the seat assembly's mounting brackets, see FIG. 4. Secure using one (F), (I), (J) and two (H) per each (F). Level all seats and top, and tighten with proper tools.



## installation:

**WARNING:** The proper installation for Wabash Valley products may depend upon many factors unique to the site, location, or use of a particular product. Consult with your contractor or other professional to determine your specific installation requirements.

*product dimensions:*

