

model no:

SG175D, SG175P,
SG176D, SG176P

SIGNATURE SERIES

4' & 6' CHILDREN'S PICNIC TABLE
EXPANDED METAL & PERFORATED

customer service:

ASSEMBLERS: If you find any parts missing or damaged, or if you're having difficulty assembling your furniture/equipment, call us at:

* Before calling, have your product model number available.

1-800-253-8619 (Inside U.S.A.)

260-352-2102 (Outside U.S.A.)

Monday thru Friday,

8:00 AM - 4:30 PM Eastern Time

(EXCEPT HOLIDAYS)

maintenance:

Regular inspection and maintenance of all parts, and fasteners is necessary. Tighten all bolts and nuts. Inspect Tops, Seats, Legs, Braces and Fasteners periodically for wear or vandalism. Replace broken or worn parts immediately or take equipment out of service until repairs are made. Use genuine Wabash Valley replacement parts.

To restore plastisol coating to its luster after prolonged use, wash/rinse/dry and use Armor-All ® or similar quality vinyl protectant.

KEEP THIS ASSEMBLY/SPECIFICATION SHEET FOR FUTURE REFERENCE.

specifications:

NOTE: We reserve the right to change specifications without notice.

Heat fused poly-vinyl coating, finished on inner-metal structure, to an approximate 3/16" thickness.

Framework assemblies are finished with powder coating; electrostatically applied and oven cured according to powder manufacturer's specifications. Fasteners are stainless steel to resist corrosion.

TABLE FRAME:

Main supports are constructed of 1 5/8" od x 14 gage galvanized structural steel tubing. Cross brace is 1" od x 15 gage galvanized structural steel tubing. Mounting brackets on legs are 1/4" x 1 1/4" steel flat bar.

TOP & SEATS:

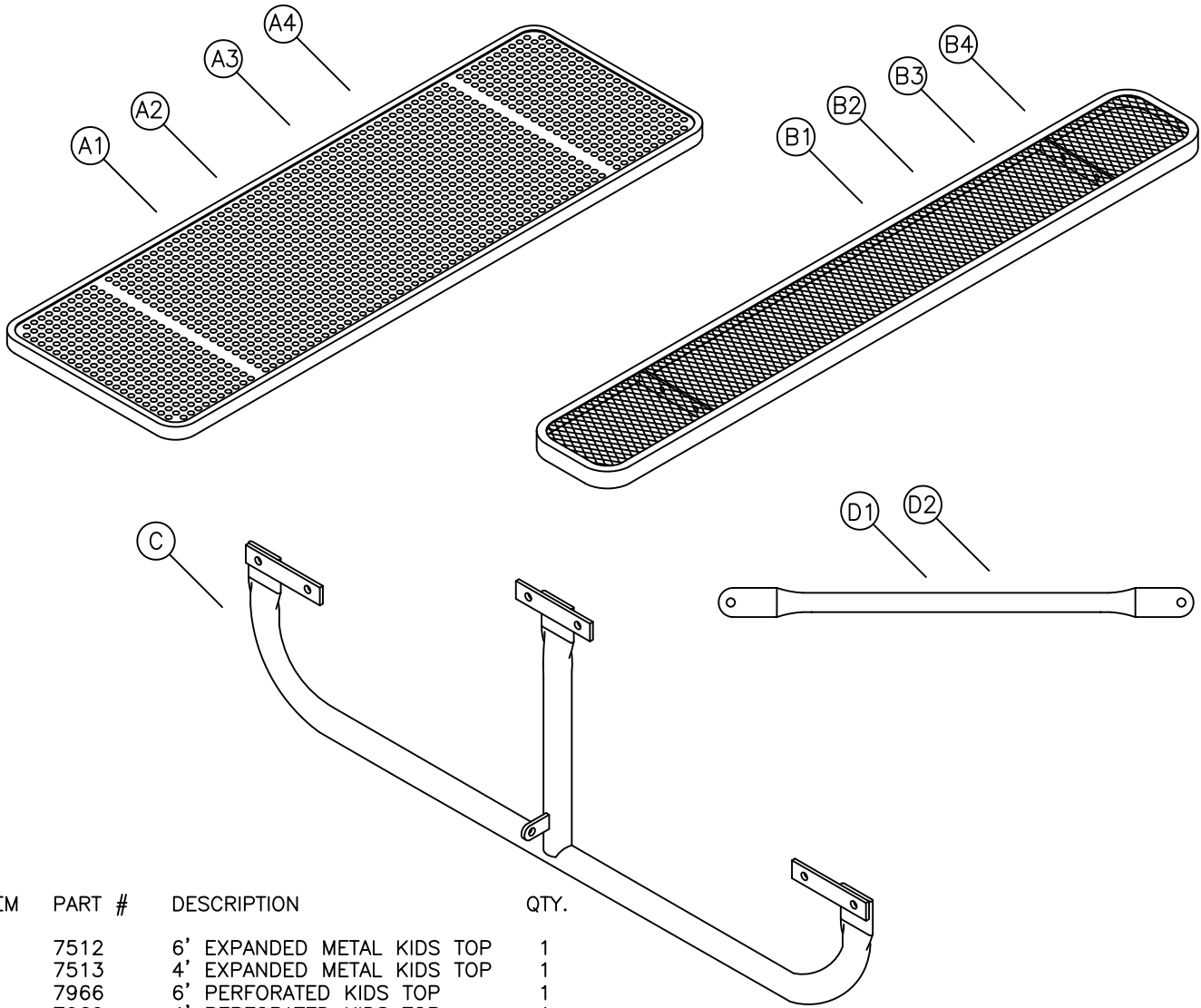
Top and seats use fabricated 3/4" #9 expanded steel mesh and 12 gage sheet metal for perforated. Framing consists of die-formed 14 gage mitered angles 3/4" x 1 3/4". The top's mounting brackets are 1/4" x 1 1/2" steel flat bar.

GENERAL:

4' picnic table ground space requirements are 48 1/4" x 52 1/2". Table top is 24 1/4" wide and 19 1/2" to the top of the table. Seats are 10 1/4" wide and 11 1/4" to the top of the seat. Corner radius is 3" to the outside.

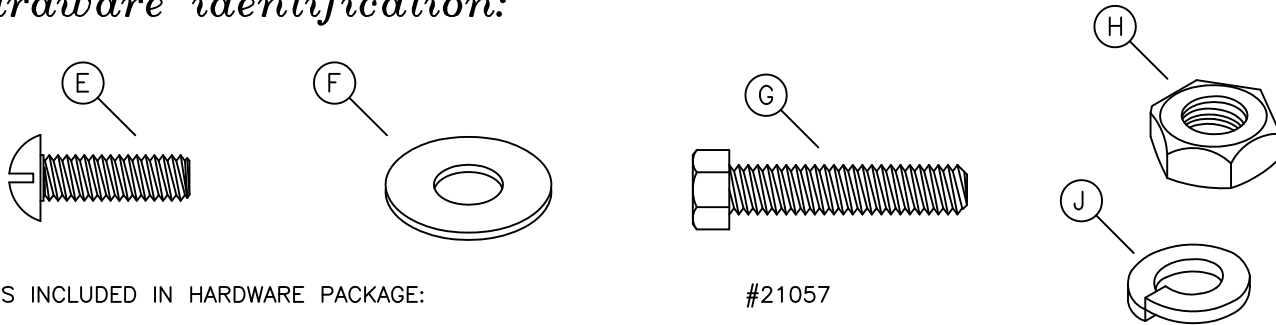
6' picnic table ground space requirements are 72 1/4" x 52 1/2". Table top is 24 1/4" wide and 19 1/2" to the top of the table. Seats are 10 1/4" wide and 11 1/4" to the top of the seat. Corner radius is 3" to the outside.

parts identification:



ITEM	PART #	DESCRIPTION	QTY.
A1	7512	6' EXPANDED METAL KIDS TOP	1
A2	7513	4' EXPANDED METAL KIDS TOP	1
A3	7966	6' PERFORATED KIDS TOP	1
A4	7969	4' PERFORATED KIDS TOP	1
B1	7587R	4' EXPANDED METAL KIDS SEAT	2
B2	7586	6' EXPANDED METAL KIDS SEAT	2
B3	7997	4' PERFORATED KIDS SEAT	2
B4	7995	6' PERFORATED KIDS SEAT	2
C	7330	4' & 6' KIDS LEG	2
D1	7384	4' KIDS BRACE	1
D2	7385	6' KIDS BRACE	1

hardware identification:



ITEMS INCLUDED IN HARDWARE PACKAGE:

#21057

ITEM	PART#	DESCRIPTION	QTY
E	17088	5/16-18 x 1" TRUSS HEAD MACHINE SCREW - SS	2
F	17028	3/8" FLAT WASHER - SS	28
G	17011	5/16-18 x 1 1/2" HEX HEAD BOLT - SS	12
H	17032	5/16-18 HEX FINISH NUT - SS	14
J	17050	5/16" SPLIT LOCK WASHER - SS	14

TOOLS REQUIRED FOR ASSEMBLY

- 2 - 1/2" WRENCHES
- 1 - 3' OR 6' LEVEL
- 1 - STANDARD SCREW DRIVER

assembly procedures: IMPORTANT: Assemblers should be reasonably skilled in the assembly of commercial grade/heavy duty fabricated steel equipment.

To ensure proper assembly, it is suggested that you take adequate time to locate and identify each part. To prevent scratching of the finished pieces, we recommend this unit to be assembled on a clean, flat, solid, surface with a drop cloth, allowing plenty of working room. Also please read the instructions and study the sketches very carefully. A little extra time spent before assembly will be well worth it in performing a complete, proper assembly. Please note that all parts have been pre-cut and pre-drilled.

During the assembly process leave all bolts and nuts "finger tight", until the entire unit is completely assembled. This allows room for movement to level or adjust all seats, tops, benches, framework and braces if necessary. After final adjustment and leveling, permanently tighten all nuts, bolts and fasteners.

76

STEP 1

Invert the (A-) top so it's upside down on a flat surface. Attach the two (C) legs to the outermost part of the top's end leg mounting brackets, see FIG. 1. Use two, per leg, (G) and (H) using two (F) and one (J) per (G).

Attach one end of the (D-) brace to a tab on one leg, while attaching the opposite end of the brace to the tab on the other leg, refer to FIG. 1. Use one (E) and (H) using two (F) and one (J) on each of the braces.

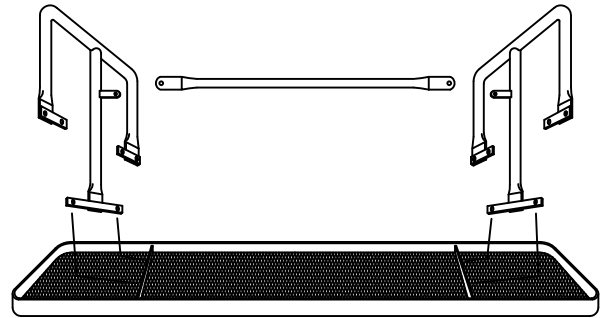


FIG. 1

STEP 2

Check all fasteners making sure each fastener is finger tight and properly supporting the unit. Re-invert the table to its topside up position.

STEP 3

Attach both (B-) seats to each side of the picnic table, aligning the seat's mounting brackets to the inside of the leg's mounting brackets, as shown in FIG. 2. Use two, per mounting bracket, (G) and (H) using two (F) and one (J) per (G).

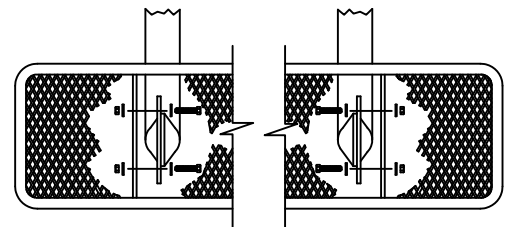


FIG. 2

STEP 4

Level both seats and top if necessary. Tighten all fasteners with wrenches.

installation: WARNING: The proper installation for Wabash Valley products may depend upon many factors unique to the site, location, or use of a particular product. Consult with your contractor or other professional to determine your specific installation requirements.

product dimensions:

