

Table Series

model no:

GVAX72P

GVAV72P

SQUARE BAR TABLES – 30" & 36"

PolyTuf® Plastic lumber Custom-Extruded, Portable, Slat

customer service:

ASSEMBLERS: If you find any parts missing or damaged, or if you're having difficulty assembling your furniture/equipment, call us at:

* Before calling, have your product model number available.

1-800-253-8619 (Inside U.S.A.)

260-352-2102 (Outside U.S.A.)

Monday thru Friday,
8:00 AM – 4:30 PM Eastern Time
(EXCEPT HOLIDAYS)

maintenance:

Regular inspection and maintenance of all parts, and fasteners is necessary. Tighten all bolts and nuts. Inspect Tops, Seats, Legs, Braces and Fasteners periodically for wear or vandalism. Replace broken or worn parts immediately or take equipment out of service until repairs are made. Use genuine Green Valley replacement parts.

KEEP THIS ASSEMBLY/SPECIFICATION SHEET FOR FUTURE REFERENCE.

specifications:

NOTE: We reserve the right to change specifications without notice.

Framework assemblies are finished with powder coating; electrostatically applied and oven cured according to powder manufacturer's specifications. Fasteners are stainless steel to resist corrosion.

TABLES:

The Table's frame is constructed of extruded aluminum tubing. The Table Legs consist of extruded aluminum tubing. The planks are made of PolyTuf® Plastic lumber consisting of recycled plastic.

GENERAL:

Square Table 30" ground space requirements are 30.1" wide x 30.1" long. The overall height is 40 3/8".

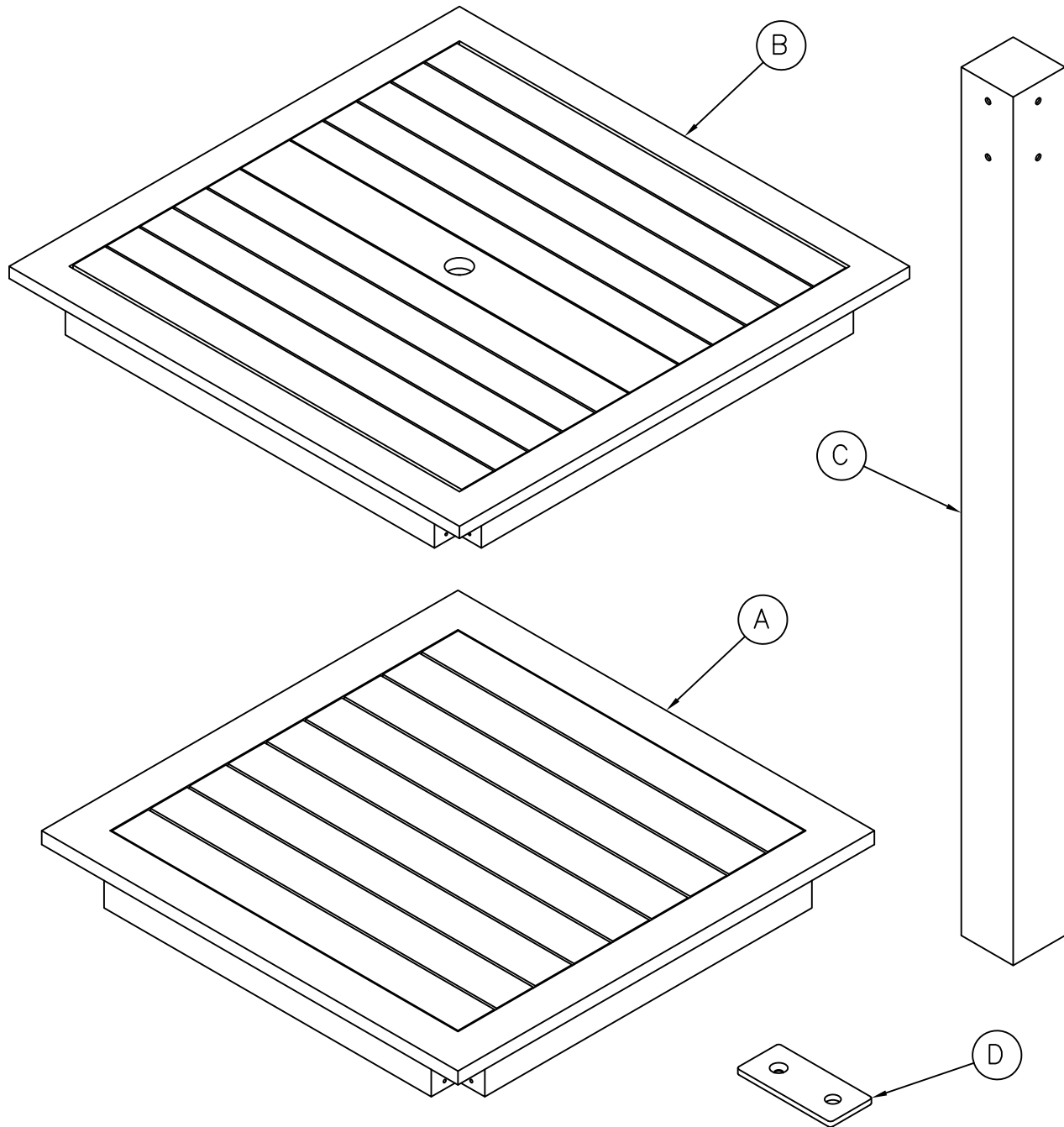
Square Table 36" ground space requirements are 37.2" wide x 37.2" long. The overall height is 40 3/8".

assembly procedures: IMPORTANT: Assemblers should be reasonably skilled in the assembly of commercial grade/heavy duty fabricated steel equipment.

To ensure proper assembly, it is suggested that you take adequate time to locate and identify each part. To prevent scratching of the finished pieces, we recommend this unit to be assembled on a clean, flat, solid, surface with a drop cloth, allowing plenty of working room. Also please read the instructions and study the sketches very carefully. A little extra time spent before assembly will be well worth it in performing a complete, proper assembly. Please note that all parts have been precut and pre-drilled.

During the assembly process leave all bolts and nuts "finger tight", until the entire unit is completely assembled. This allows room for movement to level or adjust all seats, tops, benches, framework and braces if necessary. After final adjustment and leveling, permanently tighten all nuts, bolts and fasteners.

7L



ITEM	PACKAGE#	DESCRIPTION
A, C	16454	30 X 30 TOP W/ BAR LEGS
B, C	16455	36 X 36 TOP W/ BAR LEGS
D	16016	YORKTOWN SURFACE MOUNT PAD W/ HARDWARE (OPTIONAL)

installation: WARNING: The proper installation for Green Valley products may depend upon many factors unique to the site, location, or use of a particular product. Consult with your contractor or other professional to determine your specific installation requirements.

assembly procedures:

NOTE: The following steps are typical for each table variation.

STEP 1

Invert the top upside down on a flat, clean surface. Attach each leg to each corner as shown below aligning holes on legs with holes in top. Using (4) M6 x 1 x 20 Hex head bolts secure each leg to each corner of top.

STEP 2

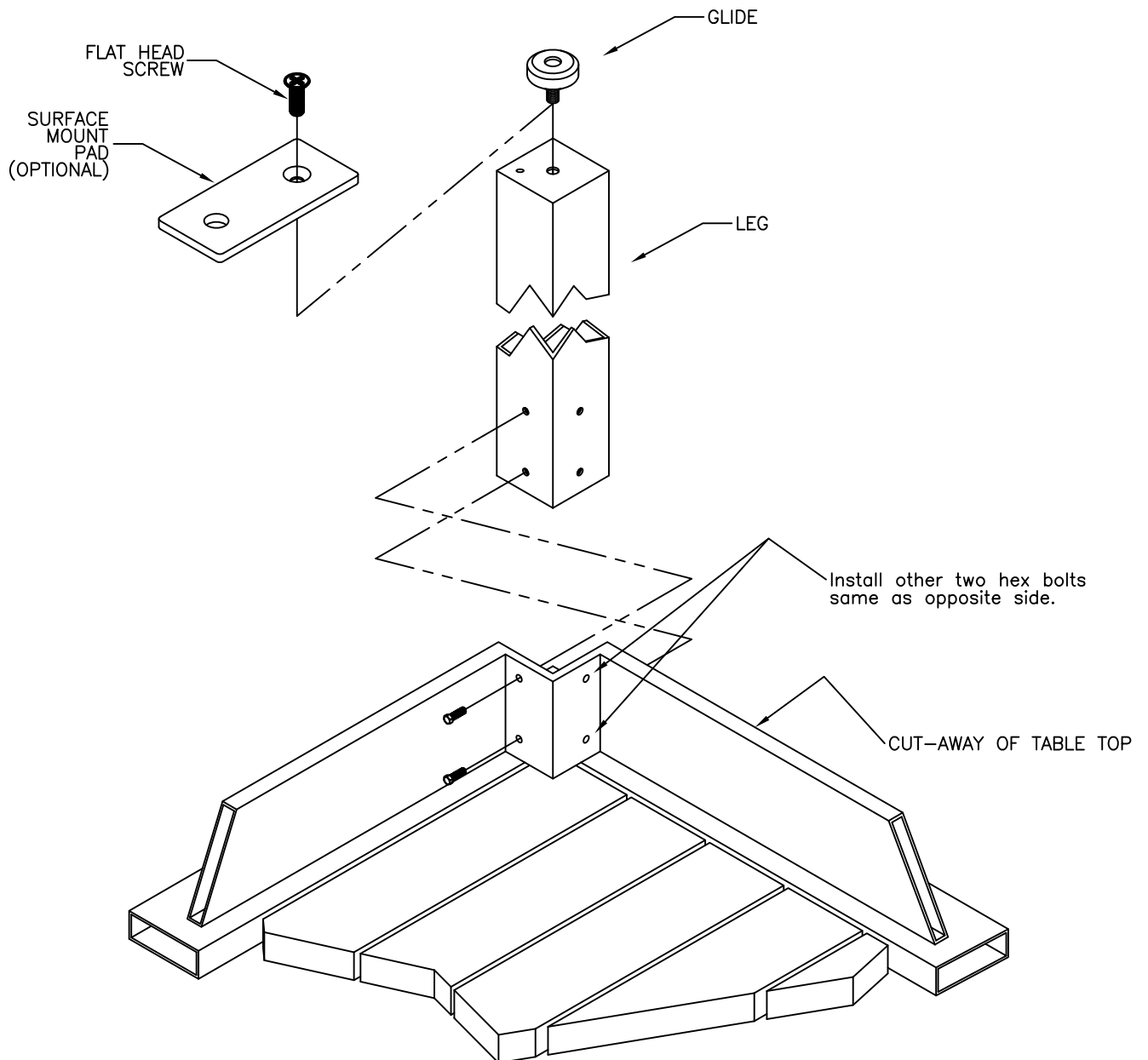
Re-invert the table to its' upright position.

STEP 3

Level top if necessary with Glides provided and tighten remaining fasteners with wrenches.

STEP 4

NOTE: If you choose the optional Surface Mount Pad, the Glide is Not used. Use hardware provided and secure Pad to bottom of leg. (Anchor bolts are not included)



product dimensions:

