

model no:



SG201D, SG201P

SIGNATURE SERIES

WABASH VALLEY

**6' PICNIC TABLE SINGLE PEDESTAL INGROUND
EXPANDED METAL & PERFORATED**

© Wabash Valley Manufacturing, Inc.

customer service:

ASSEMBLERS: If you find any parts missing or damaged, or if you're having difficulty assembling your furniture/equipment, call us at:

* Before calling, have your product model number available.

1-800-253-8619 (Inside U.S.A.)

260-352-2102 (Outside U.S.A.)

Monday thru Friday,

8:00 AM - 4:30 PM Eastern Time

(EXCEPT HOLIDAYS)

Any correspondence concerning our product should be sent directly to our Customer Service Manager at:

Wabash Valley Manufacturing, Inc.
505 E. Main Street
P.O.Box 5
Silver Lake, IN 46982 U.S.A.
FAX: 260-352-2160

maintenance:

Regular inspection and maintenance of all parts, and fasteners is necessary. Tighten all bolts and nuts. Inspect Tops, Seats, Legs, Braces and Fasteners periodically for wear or vandalism. Replace broken or worn parts immediately or take equipment out of service until repairs are made. Use genuine Wabash Valley replacement parts.

To restore plastisol coating to its luster after prolonged use, wash/rinse/dry and use Armor-All ® or similiar quality vinyl protectant.

KEEP THIS ASSEMBLY/SPECIFICATION SHEET FOR FUTURE REFERENCE.

specifications:

NOTE: We reserve the right to change specifications without notice.

Heat fused poly-vinyl coating, finished on inner-metal structure, to an approximate 3/16" thickness. Framework assemblies are finished with powder coating; electrostatically applied and oven cured according to powder manufacturer's specifications. Fasteners are stainless steel to resist corrosion.

TABLE FRAME:

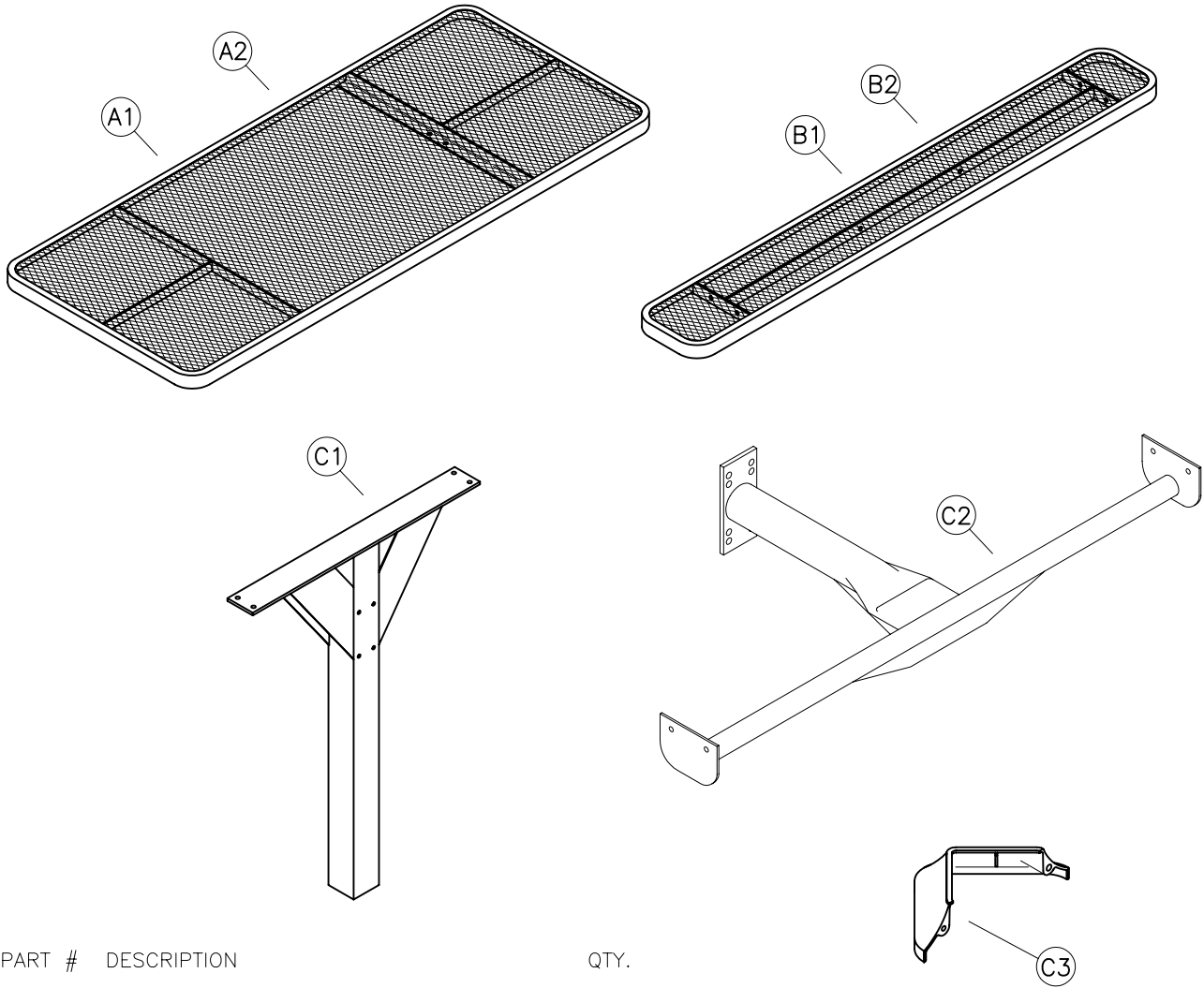
Main support is constructed from a 4" x 4" x 11 gage galvanized structural steel square tubing. Mounting plate on the top of post is 3/8" x 3 1/2" x 36" plate steel. Seat assembly arm is constructed of 2 7/8" od x 9 gage galvanized structural steel tubing. Cross tubing is 2 3/8" od x 12 gage galvanized structural steel tubing. Seat's mounting ears are 10 gage sheet steel. Mounting bracket to post is 3/8" x 3 1/2" x 8" plate steel.

TOP & SEATS:

Top and seats use fabricated 3/4" #9 expanded steel mesh and 12 gage sheet metal for perforated. Framing consists of 14 gage mitered angles 3/4" x 1 3/4". Top's mounting brackets are 1/4" x 1 1/2" x 1 1/2" angle iron. Seat's mounting brackets are 1/4" x 1 1/2" steel flat bar.

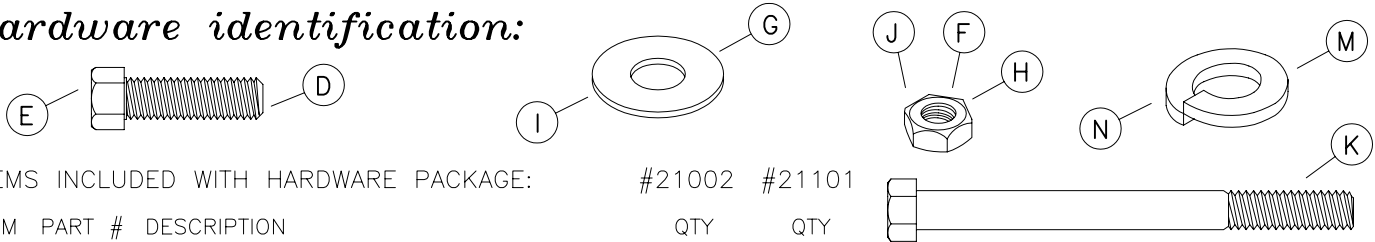
6' picnic table ground space requirements are 72 3/8" x 57 1/2". Table top is 30 3/8" wide and 30" to the top of table. Seats are 10 3/8" wide x 72 3/8" long and 20 3/16" to the top of seat. Corner radius is 3" to the outside.

parts identification:



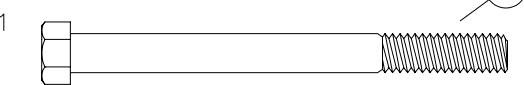
ITEM	PART #	DESCRIPTION	QTY.
A1	7503R	6' EXPANDED METAL INGROUND TOP	1
A2	7965	6' PERFORATED INGROUND TOP	1
B1	7529R	6' EXPANDED METAL SEAT	2
B2	7994	6' PERFORATED SEAT	2
C1	7304	INGROUND POST	1
C2	7317	6' SEAT ASSEMBLY	2
C3	7151	MOUNTING PLATE COVER (OPTIONAL)	1

hardware identification:



ITEMS INCLUDED WITH HARDWARE PACKAGE: #21002 #21101

ITEM	PART #	DESCRIPTION	QTY	QTY
D	17011	5/16-18 x 1 1/2" HEX HEAD BOLT - SS	12	0
E	17013	3/8-16 x 1 1/4" HEX HEAD BOLT - SS	4	0
F	17019	3/8-16 HEX FINISH NUT - SS	4	0
G	17028	3/8" FLAT WASHER - SS	32	0
H	17032	5/16-18 HEX FINISH NUT - SS	12	0
I	17043	7/16" FLAT WASHER - SS	8	0
J	17044	7/16-14 HEX FINISH NUT - SS	4	0
K	17051	7/16-14 x 5 1/2" HEX HEAD BOLT - SS	4	0
L	17052	1/4-20 x 1" MACHINE SCREW - SS	0	2
M	17050	5/16" SPLIT LOCK WASHER - SS	12	0
N	17105	7/16" SPLIT LOCK WASHER - SS	4	0



ASSEMBLY TOOLS REQUIRED:

L	1 - FLAT SCREW DRIVER
	2 - 1/2" WRENCHES
	2 - 9/16" WRENCHES
	1 - 5/8" WRENCH
	1 - 11/16" WRENCH
	1 - TAPE MEASURE
	1 - 3' OR 6' LEVEL

assembly procedures: IMPORTANT: Assemblers should be reasonably skilled in the assembly of commercial grade/heavy duty fabricated steel equipment.

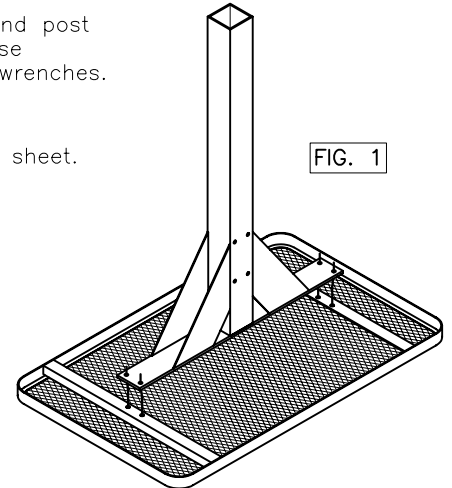
To ensure proper assembly, it is suggested that you take adequate time to locate and identify each part. To prevent scratching of the finished pieces, we recommend this unit to be assembled on a clean, flat, solid, surface with a drop cloth, allowing plenty of working room. Also please read the instructions and study the sketches very carefully. A little extra time spent before assembly will be well worth it in performing a complete, proper assembly. Please note that all parts have been pre-cut and pre-drilled.

During the assembly process leave all bolts and nuts "finger tight", until the entire unit is completely assembled. This allows room for movement to level or adjust all seats, tops, benches, framework and braces if necessary. After final adjustment and leveling, permanently tighten all nuts, bolts and fasteners.

7L

STEP 1

Invert the (A-) top so it's upside down on a flat surface. Turn the (C1) inground post upside down and attach to the bottom side of the top, see FIG. 1. 6' tables use four (E) and (F) using two (G) per (E). Draw the fasteners to a snug fit with wrenches.

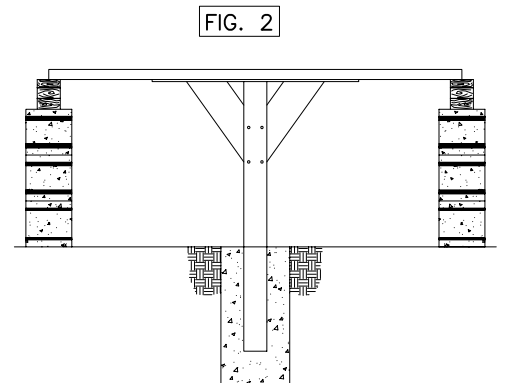


STEP 2

Prepare one foundation hole as shown on the back of this assembly instruction sheet.

STEP 3

Re-invert the unit to its top side up position and place it in the footing hole. Block the table as shown in FIG. 2. Before pouring concrete make sure the table is level horizontally as well as vertically and holds the specified height. Pour the concrete to form the footing and let cure for 48 hours.



STEP 4

Attach the two (C2) seat assembly arms to each side of the inground post, see FIG. 3. Use four (K) and (J) using two (I) and one (N) per (K).

Level the arms, then tighten fasteners with wrenches.

STEP 5

Attach one (B-) seat to the end of one seat assembly arm, aligning the seat's mounting brackets to the outside of the 6' seat, of the seat assembly arm's mounting brackets, see FIG. 4. Use four, per each bracket, (D) and (H) using two (G) and one (M) per each (D).

Repeat step 6, for the remaining seat.

STEP 6

Level seats and top if necessary and tighten all fasteners with wrenches.

If mounting plate covers (C3) are used place halves around legs and secure with 2 (L) screws, see FIG. 5. Draw to a snug fit being careful not to over tighten.

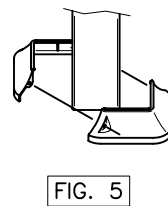
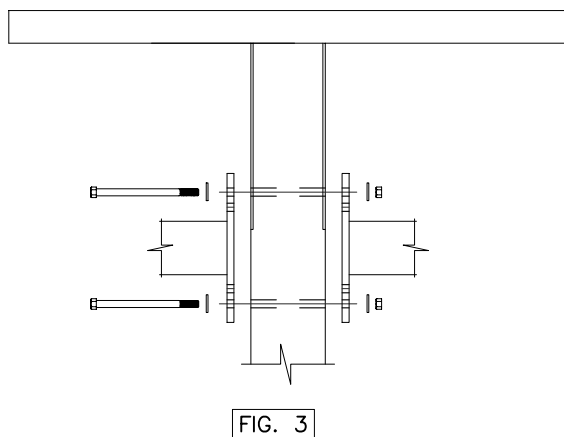
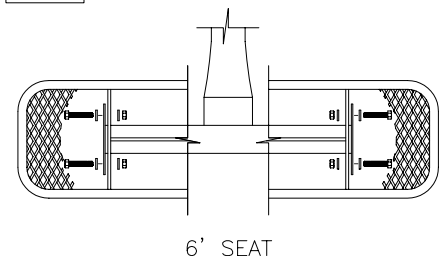


FIG. 4



6' SEAT

installation: WARNING: The proper installation for Wabash Valley products may depend upon many factors unique to the site, location, or use of a particular product. Consult with your contractor or other professional to determine your specific installation requirements.

product dimensions:

