

model no:

SP300D, SP300P, SP300R,
SP300S, SP305D, SP305P,
SP305R, SP305S,
SP310N, SP315N, SP320N
SPECIALTY SERIES



WABASH VALLEY

4' & 6' SWINGS
EXPANDED METAL, RIB, PERFORATED & SLAT

© Wabash Valley Manufacturing, Inc.

customer service:

ASSEMBLERS: If you find any parts missing or damaged, or if you're having difficulty assembling your furniture/equipment, call us at:

* Before calling, have your product model number available.

1-800-253-8619 (Inside U.S.A.)

260-352-2102 (Outside U.S.A.)

Monday thru Friday,

8:00 AM - 4:30 PM Eastern Time

(EXCEPT HOLIDAYS)

Any correspondence concerning our product should be sent directly to our Customer Service Manager at:

Wabash Valley Manufacturing, Inc.
505 E. Main Street
P.O.Box 5
Silver Lake, IN 46982 U.S.A.
FAX: 260-352-2160

maintenance:

Regular inspection and maintenance of all parts, and fasteners is necessary. Tighten all bolts and nuts. Inspect Tops, Seats, Legs, Braces and Fasteners periodically for wear or vandalism. Replace broken or worn parts immediately or take equipment out of service until repairs are made. Use genuine Wabash Valley replacement parts.

To restore plastisol coating to its luster after prolonged use, wash/rinse/dry and use Armor-All ® or similar quality vinyl protectant.

KEEP THIS ASSEMBLY/SPECIFICATION SHEET FOR FUTURE REFERENCE.

specifications:

NOTE: We reserve the right to change specifications without notice.

Heat fused poly-vinyl coating, finished on inner-metal structure, to an approximate 3/16" thickness. Framework assemblies are finished with powder coating; electrostatically applied and oven cured according to powder manufacturer's specifications. Fasteners are stainless steel to resist corrosion.

SWING BENCH FRAME:

Frames are cast aluminum with a web thickness of 5/16" and a frame width of 1 1/2".

SWING SEAT:

Expanded seat is fabricated from 3/4" #9 steel mesh. Rib uses 10 gage and perforated uses 12 gage sheet steel. Both types of fabricated metals and sheet metal are machine rolled, forming the seat's contour shape. The slat bench uses 3/16" x 2 1/2" flat bar steel. The seat's frame/mounting brackets are 10 gage sheet metal. Support braces, adding support to the bench's contour shape, are 1/4" x 1 1/4" flat bar steel.

SWING MOUNT FRAME:

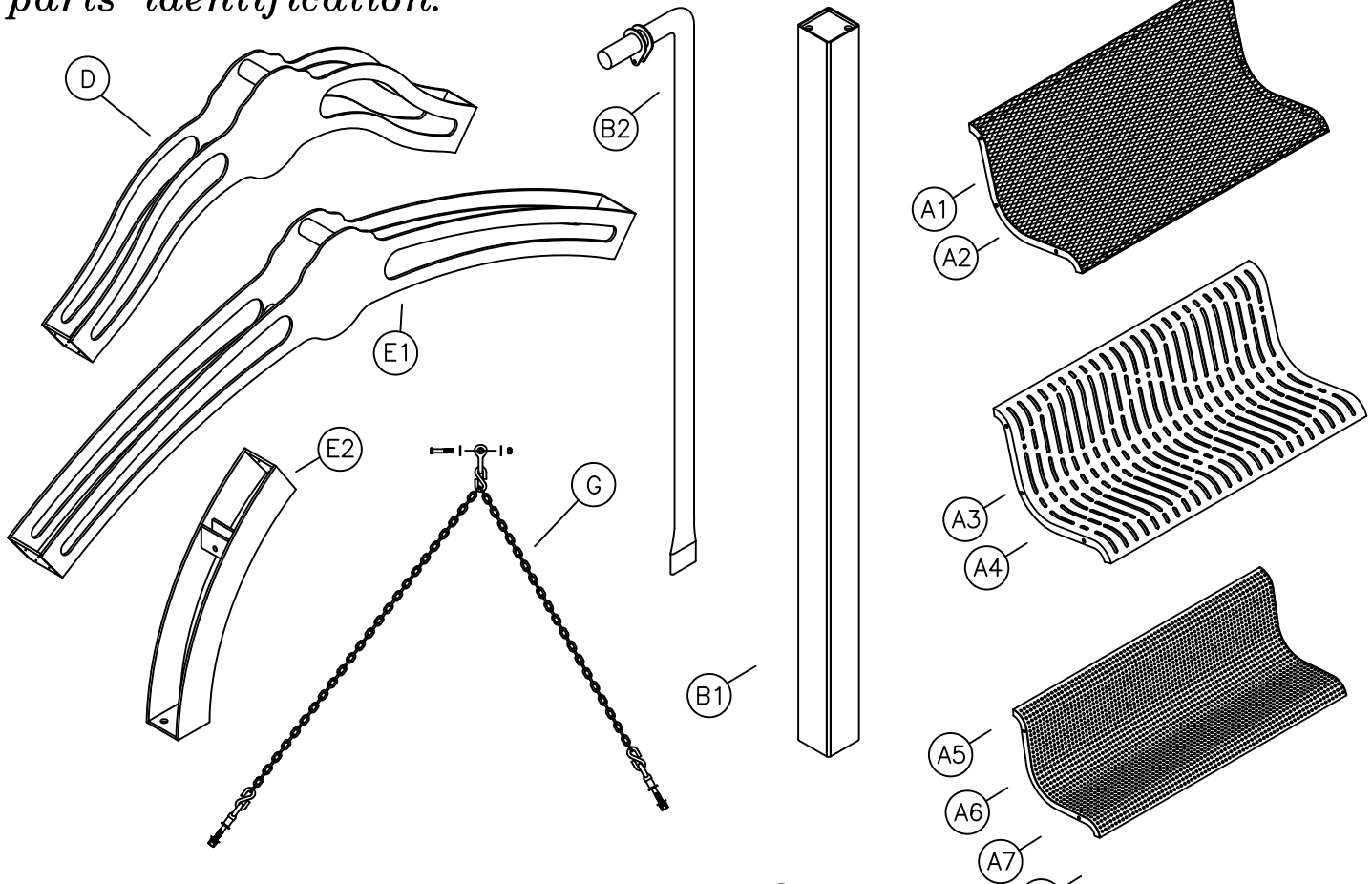
Round post is 2 7/8" od x 9 gage tubing. Square post is 4 x 4 x 11 gage tubing with an arch fabricated from 1/4" sheet metal. Support chain is 3/16" carbon steel.

GENERAL:

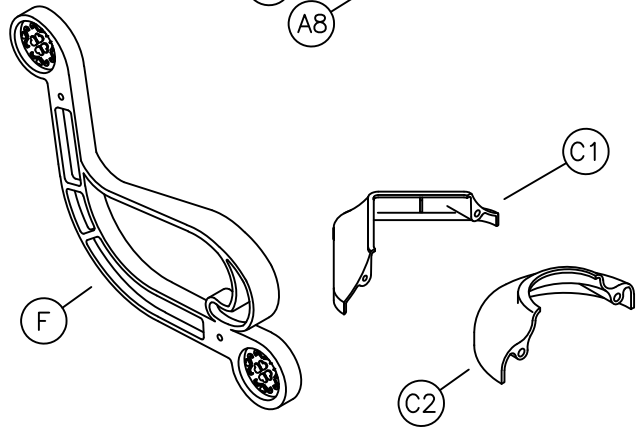
4' estate swing, round post ground space requirements are 80 5/8" long x 24" deep x 77" high, plus space for swinging. 4' estate swing, square post, ground space requirements are 76 1/8" long x 24" deep x 95 1/4" high, plus space for swinging.

6' estate swing, round post, ground space requirements are 104 5/8" long x 24" deep x 77" high, plus space for swinging. 6' estate swing, square post, ground space requirements are 100 1/8" long x 24" deep x 95 1/4" high, plus space for swinging.

parts identification:



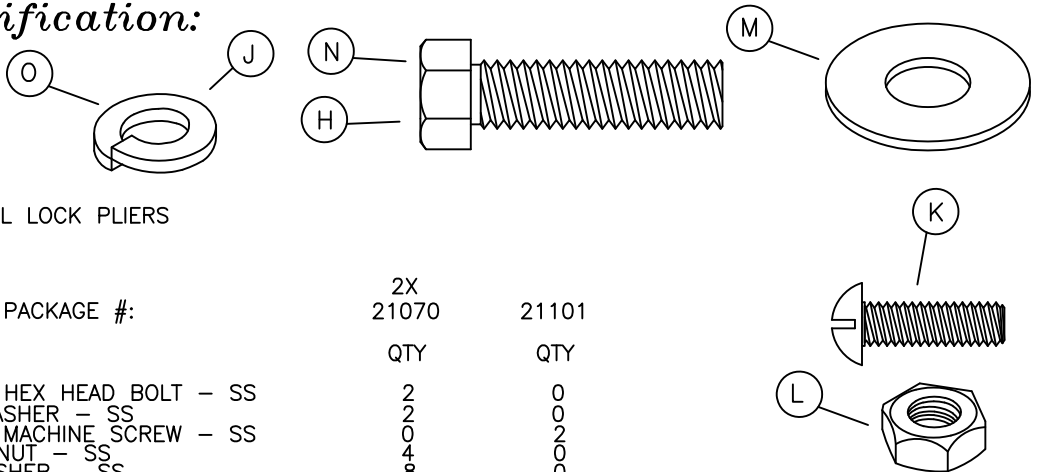
ITEM	PART#	DESCRIPTION	QTY
A1	7930	4' EXPANDED METAL CONTEMPORARY SWING	1
A2	7862	6' EXPANDED METAL CONTEMPORARY SWING	1
A3	7947	4' RIB CONTEMPORARY SWING	1
A4	7948	6' RIB CONTEMPORARY SWING	1
A5	8015	4' PERFORATED CONTEMPORARY SWING	1
A6	8016	6' PERFORATED CONTEMPORARY SWING	1
A7	8153	4' SLAT CONTEMPORARY SWING	1
A8	8154	6' SLAT CONTEMPORARY SWING	1
B1	7230	INGROUND SQUARE LEGS	2
B2	7232	INGROUND ROUND LEG	2
C1	7151	SQUARE MOUNTING PLATE COVER	2
C2	7120	ROUND MOUNTING PLATE COVER	2
D	7231	4' UPPER ARCH ASSEMBLY	1
E1	7229	6' UPPER ARCH ASSEMBLY	1
E2	7229A	LOWER ARCH ASSEMBLY	2
F	7208	ESTATE SWING LEG	2
G	7149	CHAIN ASSEMBLY	2



hardware identification:

ASSEMBLY TOOLS REQUIRED

- 1 - 15/16" WRENCH
- 1 - 3/4" WRENCH
- 2 - 9/16" WRENCH
- 1 - LARGE PAIR OF CHANNEL LOCK PLIERS
- 1 - 3' OR 6' LEVEL
- 1 - FLAT SCREW DRIVER



ITEMS INCLUDED IN HARDWARE PACKAGE #:

ITEM	PART#	DESCRIPTION	QTY	
			2X 21070	21101
H	17068	5/8-11 x 2" HEX HEAD BOLT - SS	2	0
J	17069	5/8" LOCK WASHER - SS	2	0
K	17052	1/4-20 x 1" MACHINE SCREW - SS	0	2
L	17019	3/8-16 HEX NUT - SS	4	0
M	17028	3/8" FLAT WASHER - SS	8	0
N	17013	3/8-16 x 1 1/4" HEX HEAD BOLT - SS	6	0
O	17200	3/8" LOCK WASHER - SS	4	0

assembly procedures:

IMPORTANT: Assemblers should be reasonably skilled in the assembly of commercial grade/heavy duty fabricated steel equipment.

To ensure proper assembly, it is suggested that you take adequate time to locate and identify each part. To prevent scratching of the finished pieces, we recommend this unit to be assembled on a clean, flat, solid, surface with a drop cloth, allowing plenty of working room. Also please read the instructions and study the sketches very carefully. A little extra time spent before assembly will be well worth it in performing a complete, proper assembly. Please note that all parts have been pre-cut and pre-drilled.

During the assembly process leave all bolts and nuts "finger tight", until the entire unit is completely assembled. This allows room for movement to level or adjust all seats, tops, benches, framework and braces if necessary. After final adjustment and leveling, permanently tighten all nuts, bolts and fasteners.

77

STEP 1 – ROUND LEGS

Secure legs (B2) together, per dimensions on page 4, to form one assembly, hardware not provided. Place the round leg assembly in the unit's chosen location. Stand the leg assembly so each end of the inground leg is touching the ground. Mark a 12" diameter hole around each end of the legs. Remove the leg assembly and prepare two foundation holes as shown on page 4.

Block the leg assembly similar to what is shown in FIG. 1. Before pouring concrete, make sure the round leg assembly holds 77" to the top of the leg assembly and is level horizontally as well as vertically. Pour concrete and let cure for 48 hours.

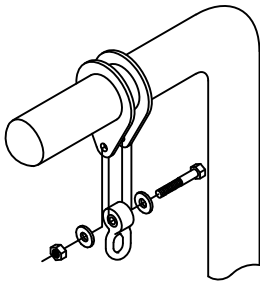
STEP 1 – SQUARE LEGS

Secure two lower arch (E2) to upper arch (D) or (E1) using four (N), eight (M), four (O) and four (L) for each lower assembly. Then secure legs (B1) to complete arch assembly using four (H) and four (J). Place the leg assembly in the unit's chosen location. Stand the leg assembly so each end of the inground leg is touching the ground. Mark a 12" diameter hole around each end of the legs. Remove the leg assembly and prepare two foundation holes as shown on page 4.

Block the leg assembly similar to what is shown in FIG. 2.

Before pouring concrete, make sure the square leg assembly holds 95 1/4" to the top of the arch and is level vertically in both directions.

Pour concrete and let cure for 48 hours.



NOTE: Chain not shown.

FIG. 4

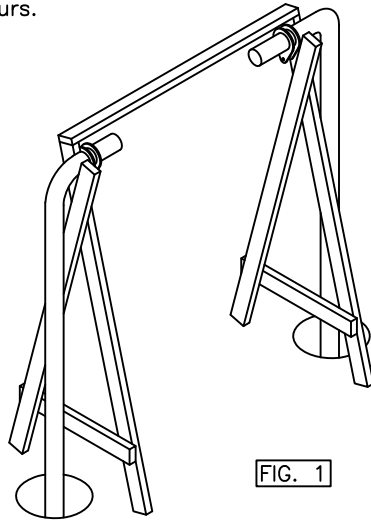


FIG. 1

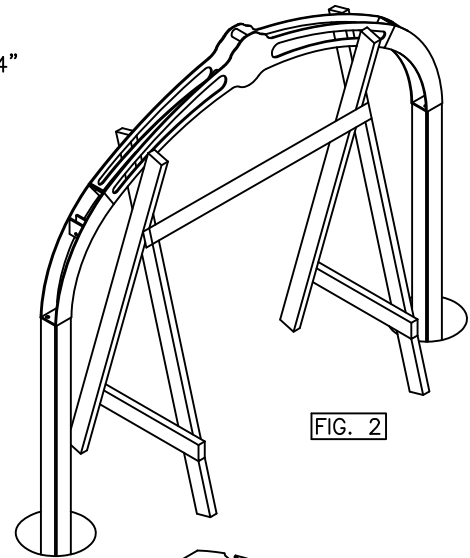


FIG. 2

STEP 2 – BENCH

Support the bench (A-) at least 4" off the ground. Align holes of the bench frame/mounting bracket to the holes in the arm (F), see Fig. 3. Insert the eyebolts through arm and bench frame and secure with flat washers and nuts provided on eyebolts. NOTE: Be sure the spacer tube is on the chain side of the leg. The eyebolt with 49 links goes to the front of the bench. After securing the chain to the bench, front and back, raise one end of the bench, bolt the swivel casting to the clevis fixture on arch (D) and (E) or round leg assembly (B2) with bolt, washers and nut provided, see FIG. 4.

NOTE: Chain not shown.

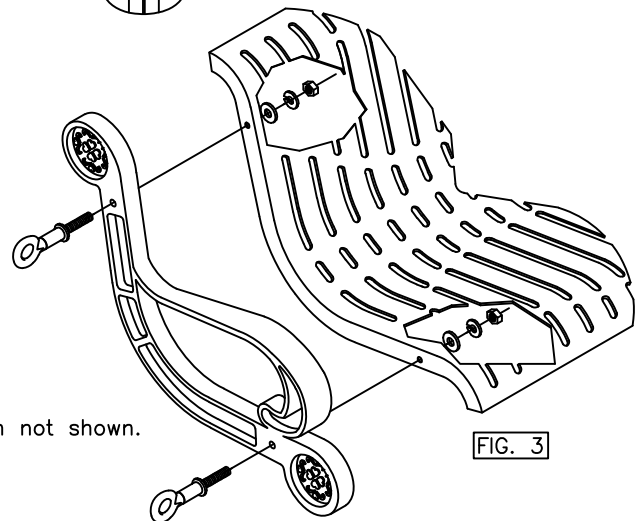


FIG. 3

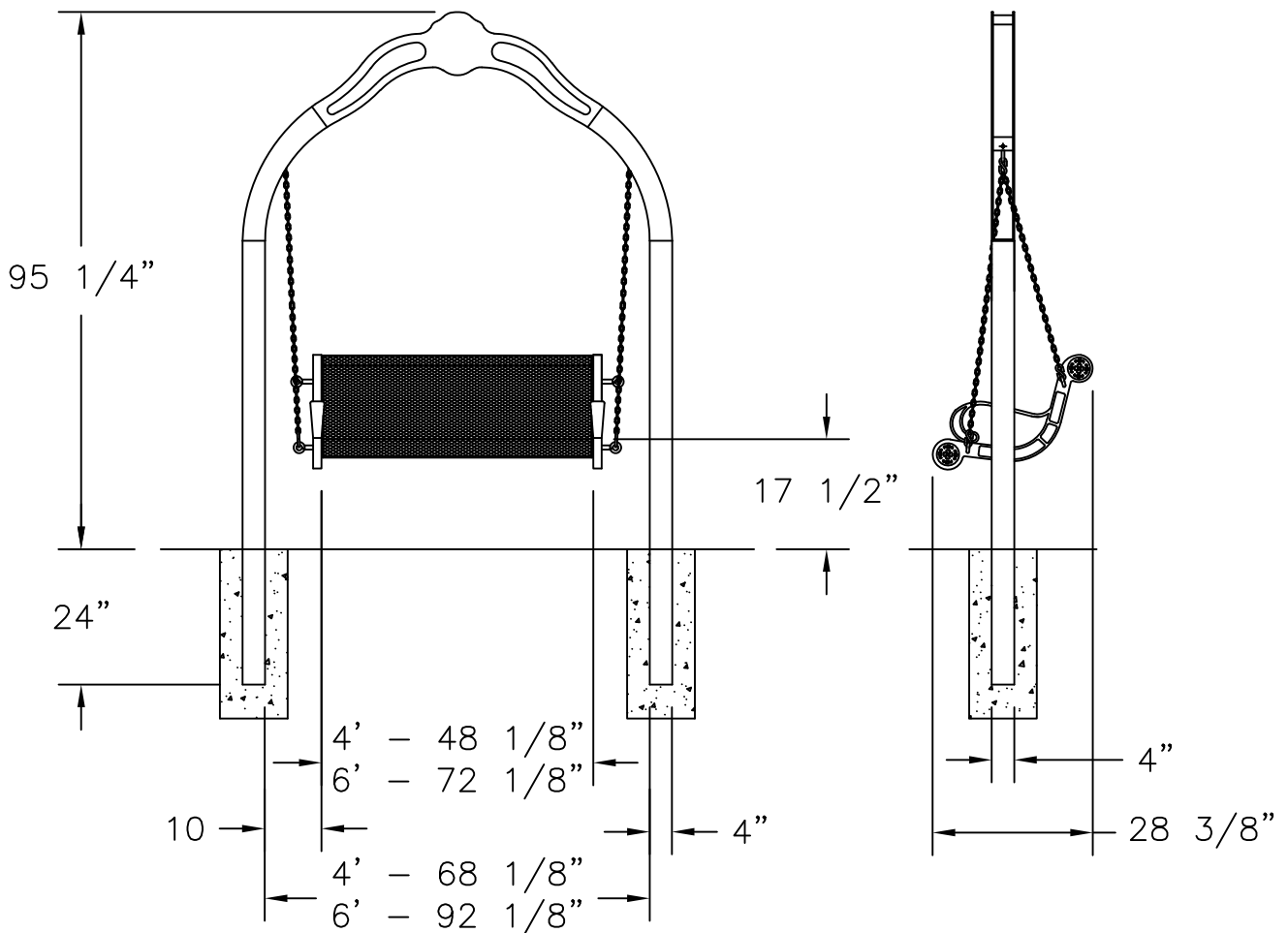
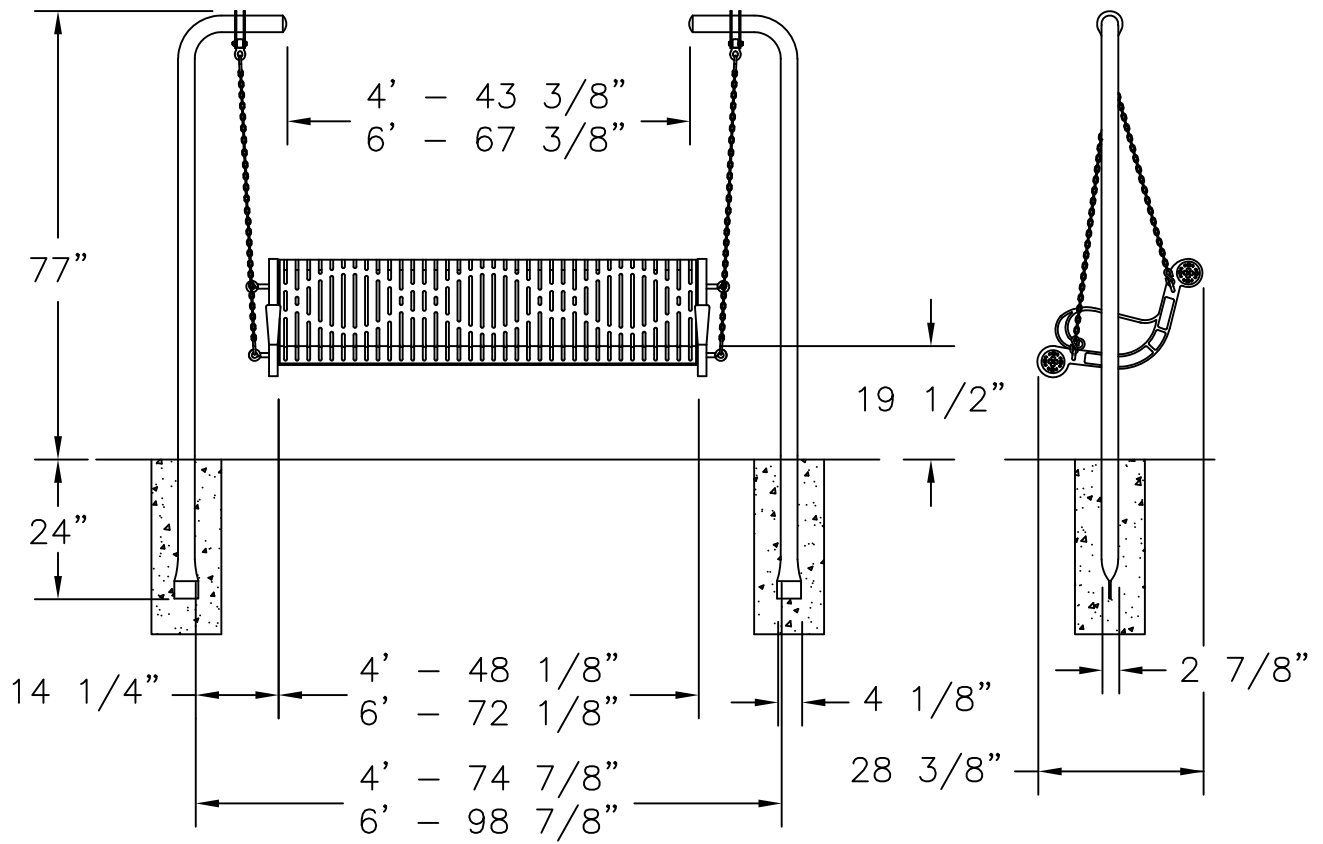
Repeat for the other end of the bench.

NOTE: EYE BOLT NEEDS TO BE IN THE VERTICAL OR IN LINE WITH THE CHAIN POSITION (SEE FIG 3).

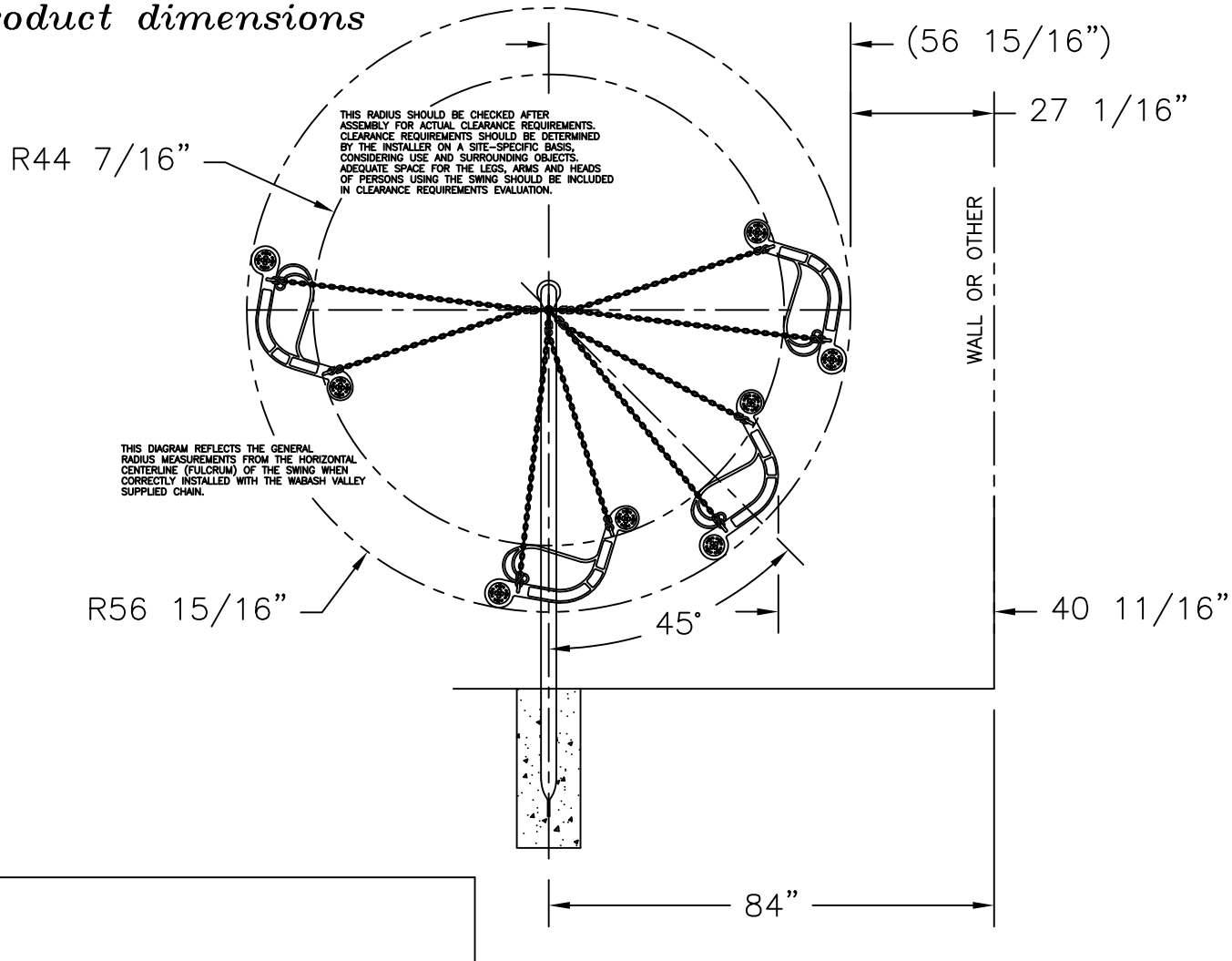
installation:

WARNING: The proper installation for Wabash Valley products may depend upon many factors unique to the site, location, or use of a particular product. Consult with your contractor or other professional to determine your specific installation requirements.

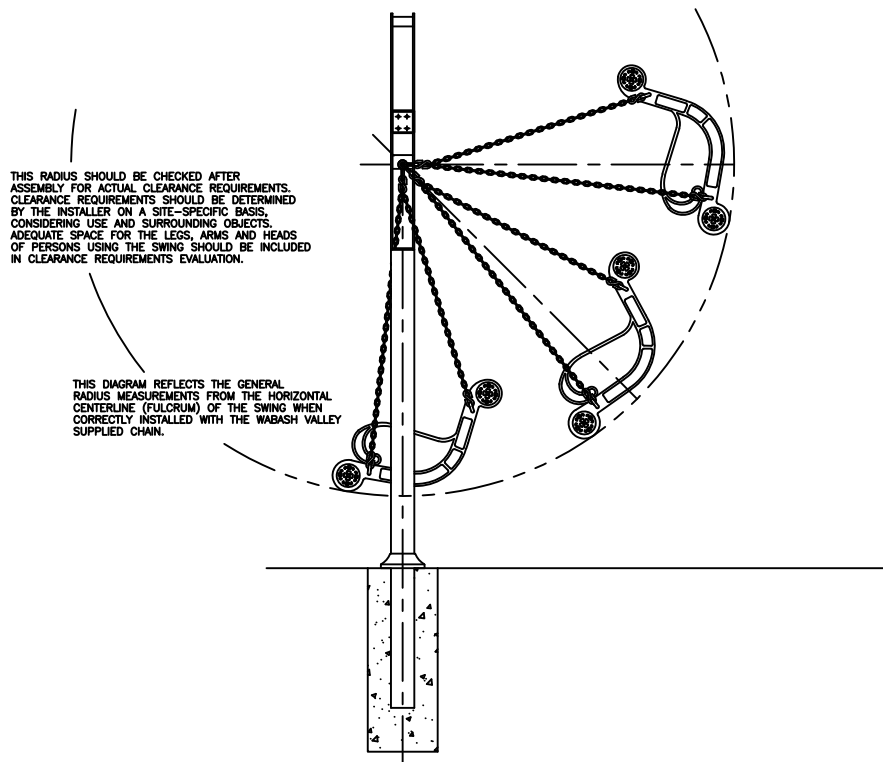
product dimensions:



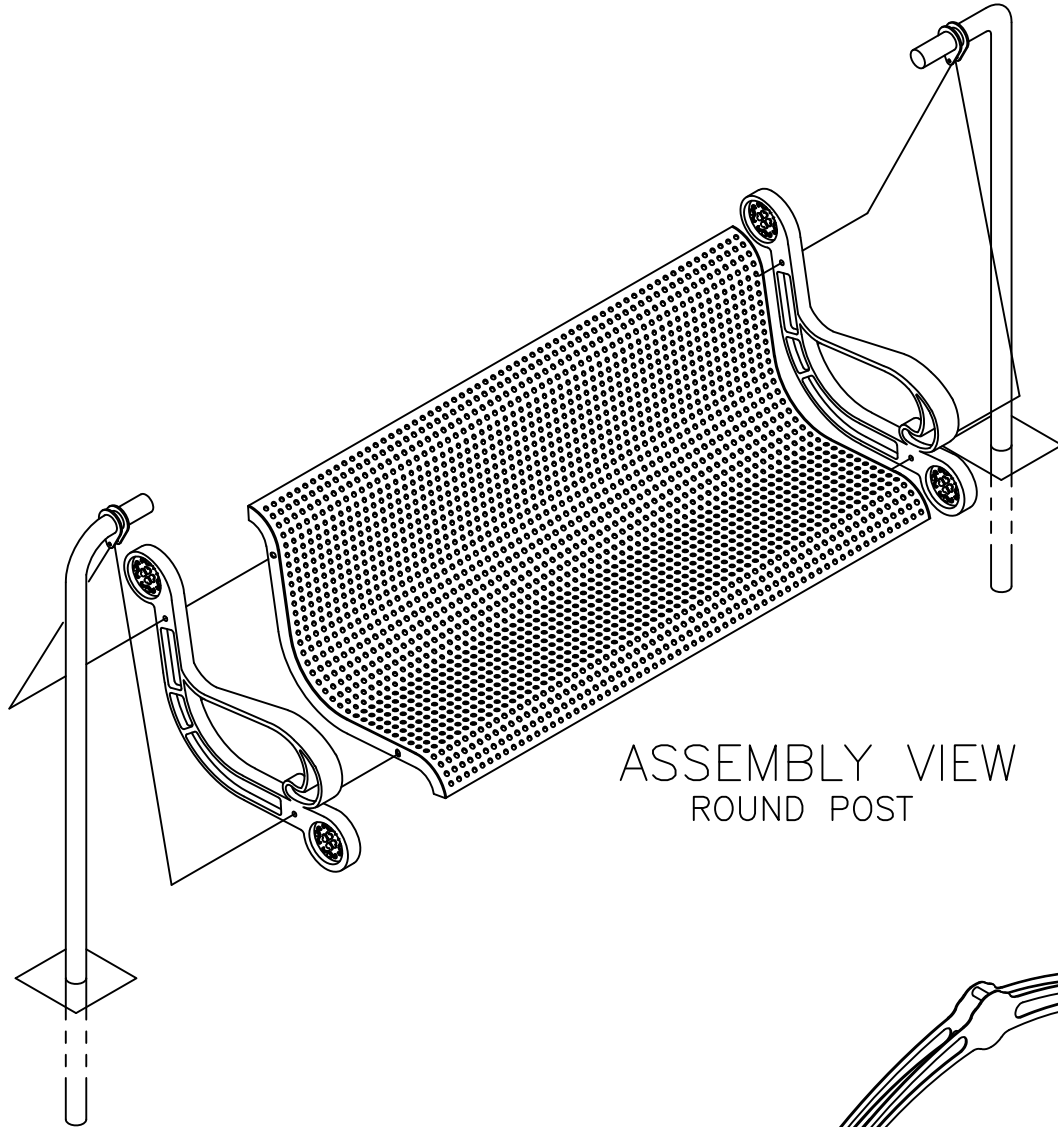
product dimensions



NOTE: DIMENSIONS SAME AS ABOVE



assembly procedures:



ASSEMBLY VIEW
ROUND POST

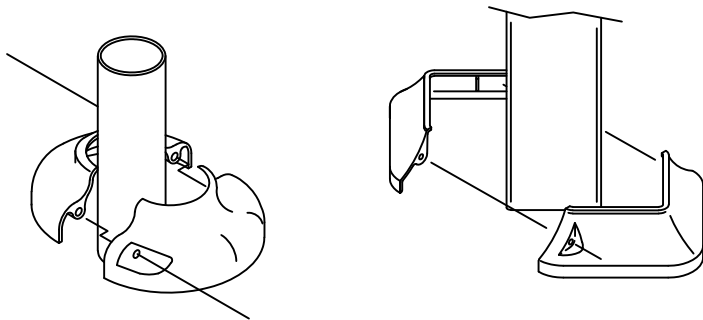
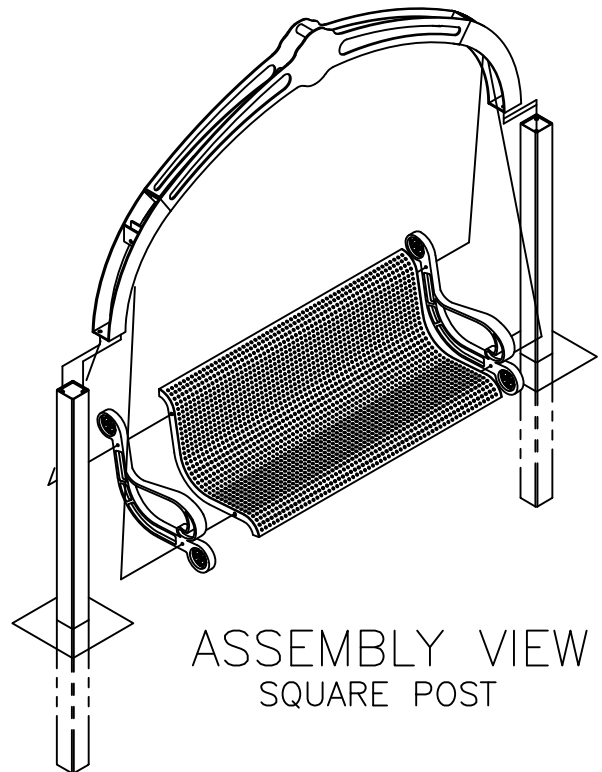


FIG. 5

If mounting plate covers (C-) are used, place halves around legs and secure with two (K) screws, see FIG. 5. Draw to a snug fit being careful not to over tighten.



ASSEMBLY VIEW
SQUARE POST